
Executive Departments

Government exists to serve, and a broad network of government organizations has been created to accomplish the purpose. The Missouri Constitution (Article II, Section 1) states: "The powers of government shall be divided into three distinct departments—the legislative, executive and judicial." This section also prohibits persons within each branch from exercising powers of the other branches. From these three branches spring the variety of organizations which deliver services of state government.

The many different names used by these groups—departments, divisions, agencies, boards, commissions, bureaus, units, sections, programs and others—can make it difficult to determine which area of government is responsible for certain services, and difficult to sort out responsibilities or relationships within the governmental framework.

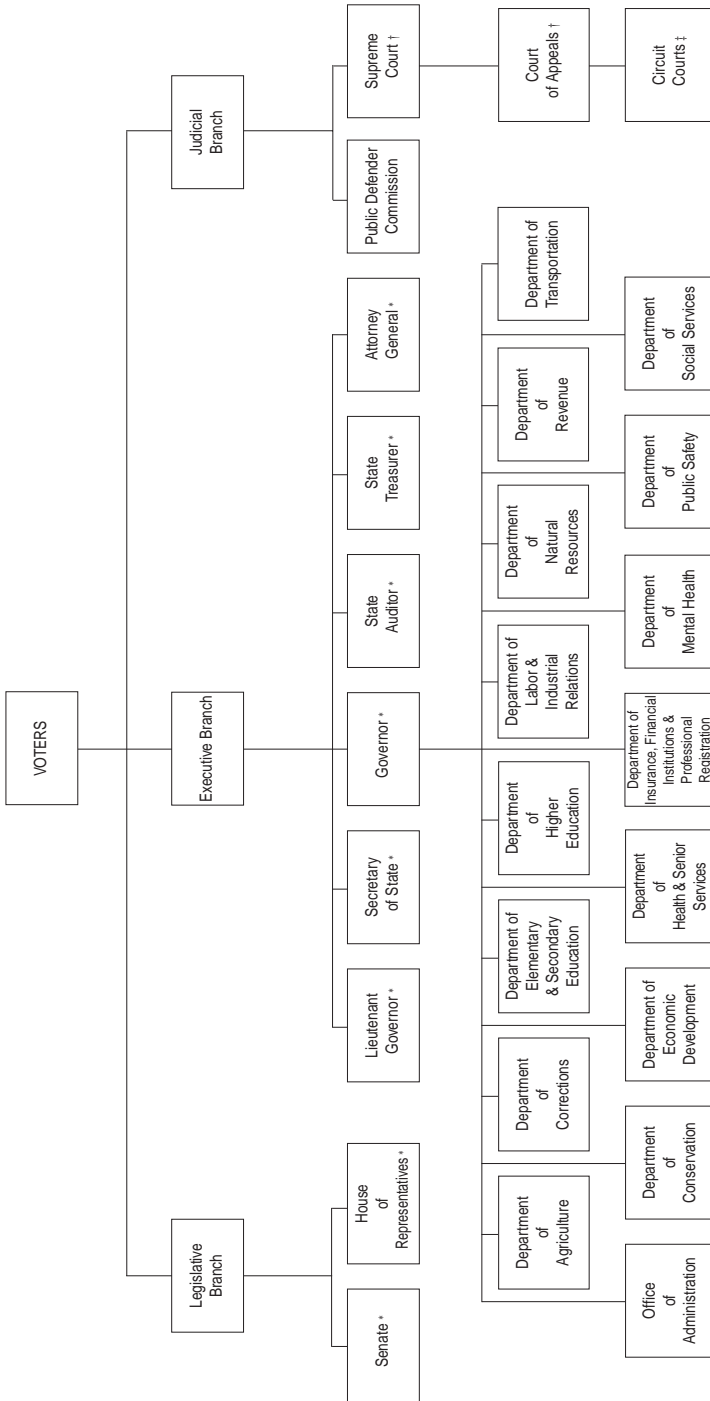
It is through the executive branch that the greatest proportion of state services are delivered. The Constitution (Article IV, Section 12) and the Reorganization Act of 1974 have established a number of "executive departments" to deal with specific areas of interest. A chart showing the present state departments is shown on the following page.

The Missouri Constitution provides for 16 specific departments: the Office of Administration and the departments of Agriculture; Conservation; Corrections; Economic Development; Elementary and Secondary Education; Health and Senior Services; Higher Education; Insurance, Financial Institutions and Professional Registration; Labor and Industrial Relations; Mental Health; Natural Resources; Public Safety; Revenue; Social Services; and Transportation.

Within each executive department exists a variety of offices of varying size and scope which deal with specific services. Traditionally, "divisions" are the next-largest organizations within departments and function to bring together smaller-sized groups, such as "bureaus," "sections" or "units." Divisions may be governed by a "board" or "commission" composed of members who are either appointed by the governor, made members by law or appointed by a department official. State agencies may administer certain sections of state law as defined by the *Revised Statutes of Missouri*, may develop their own rules and regulations as promulgated in the *Missouri Register* and *Code of State Regulations* or may institute programs and policies which address the needs of their areas of service.

Generally speaking, the legislative and judicial branches rely on committees or other small, appointed groups to perform research, develop policy, provide advocacy services or handle administrative duties. In these two branches, services are delivered through the offices of the elected officials themselves and not by related agencies.

Missouri Roster



* Indicates elected offices

† Indicates appointed offices subject to public vote for retention

‡ Some circuit court judges are elected. Others are appointed under the Missouri Nonpartisan Plan. All are subject to public vote for retention

Office of Administration

PO Box 809, Jefferson City 65102
www.aa.mo.gov

The Office of Administration is the state's service and administrative control agency. Created by the General Assembly on January 15, 1973, it combines and coordinates the central management functions of state government. Its responsibilities were clarified and amended by the Omnibus State of Missouri Reorganization Act of 1974.

The chief administrative officer is the commissioner of administration who is appointed by the governor with the advice and consent of the Senate. The commissioner appoints the deputy commissioners and the division directors of the Office of Administration. The divisions are: Accounting; Budget and Planning; Information Technology Services; Facilities Management, Design and Construction; General Services; Personnel; and Purchasing and Materials Management.

Commissioner	Michael N. Keathley	(573) 751-1851
<i>State Capitol, Rm. 125</i>		
Deputy Commissioner and Chief Counsel	Richard AuBuchon	(573) 751-1851
<i>State Capitol, Rm. 125</i>		
Assistant Commissioner	Paul Buckley	(573) 751-1851
<i>State Capitol, Rm. 125</i>		

Division of Accounting

Truman State Office Building, Rm. 579

Director	Tom Sadowski	(573) 751-4013
--------------------	------------------------	----------------

Division of Budget and Planning

State Capitol, Rm. 124

Director	Larry Schepker	(573) 751-2345
--------------------	--------------------------	----------------

Division of Facilities Management, Design and Construction

Truman State Office Building, Rm. 730

Director	Dave Mosby	(573) 751-1034
--------------------	----------------------	----------------

Division of General Services

Truman State Office Building, Rm. 760

Director	Mark S. Kaiser	(573) 751-4656
--------------------	--------------------------	----------------

Division of Information Technology Services

Truman State Office Building, Rm. 280

Chief Information Officer	Dan Ross	(573) 526-7746
-------------------------------------	--------------------	----------------

Division of Personnel

Truman State Office Building, Rm. 430, PO Box 388

Director	Chester White	(573) 751-3053
--------------------	-------------------------	----------------

Personnel Advisory Board

Truman State Office Building, Rm. 430, PO Box 388 (573) 751-4576

Division of Purchasing and Materials Management

Truman State Office Building, Rm. 630

Director	James Miluski	(573) 751-3273
--------------------	-------------------------	----------------

Administrative Hearing Commission*Truman State Office Building, Rm. 640*

Commissioner	June Striegel Doughty	(573) 751-2422
Commissioner	John Kopp	(573) 751-2422
Commissioner	Terry M. Jarrett	(573) 751-2422

Board of Fund Commissioners*Truman State Office Building, Rm. 579*

Executive Secretary	Karen Harms	(573) 751-2971
---------------------	-------------	----------------

Children's Trust Fund*PO Box 1641, Jefferson City 65102*

Executive Director	Kirk Schreiber	(573) 751-5147
--------------------	----------------	----------------

Governor's Council on Disability*Truman State Office Building, Rm. 250-A*

Executive Director	Linda Baker	(573) 751-2600
--------------------	-------------	----------------

Health and Educational Facilities Authority*15450 S. Outer Forty Rd., Ste. 230**Chesterfield 63017* (636) 519-0700**Jackson County Sports Complex Authority***8501 Stadium Dr., Kansas City 64129* (816) 921-3600**Missouri Consolidated Health Care Plan***PO Box 104355, 832 Weathered Rock Ct., Jefferson City 65110* (573) 751-8881**Missouri Ethics Commission***PO Box 1370, Jefferson City 65102* (573) 751-2020**Missouri Public Entity Risk Management Fund***3425 Constitution Ct., Ste. E**Jefferson City 65109* (573) 751-1837**Missouri State Employees' Deferred Compensation Commission***Truman State Office Building, Rm. 579* (573) 751-7845**Missouri State Employees' Retirement System***907 Wildwood Dr., PO Box 209, Jefferson City 65102* (573) 632-6100**Missouri State Employees' Voluntary Life Insurance Commission***Truman State Office Building, Rm. 579* (573) 522-5863**Office of Child Advocate***PO Box 809, Jefferson City 65102*

Child Advocate	Steve Morrow	(866) 457-2302
----------------	--------------	----------------

Office of Supplier and Workforce Diversity*Truman State Office Building, Rm. 630*

Director	Donna White	(573) 751-8130
----------	-------------	----------------

Second State Capitol Commission*Truman State Office Building, Rm. 730* (573) 751-1034

Department of Agriculture

1616 Missouri Blvd., PO Box 630, Jefferson City 65102
 www.mda.mo.gov

Like Missouri agriculture, the duties of the Missouri Department of Agriculture are diverse. The department enforces those state laws that regulate and market Missouri's agricultural industry. The agency administers programs that protect the state's producers, processors, distributors and consumers of food, fuel and fiber, while marketing Missouri agricultural products at home and abroad.

Created by the General Assembly in 1933, the agriculture department is managed by a director who is appointed by the governor and confirmed by the Senate. The director determines department policy, oversees the department's divisions and disseminates information to the governor, the state legislature, industry representatives and the public.

DirectorKatie Smith(573) 526-0948
Director, Weights and MeasuresRich Kaiser(573) 751-5515
Director, Agriculture Business DevelopmentTony Stafford(573) 751-2129
Acting Director, Animal Health (Acting State Veterinarian)Dr. Taylor Woods(573) 751-3377
Director, Grain Inspection and WarehousingRich Kaiser(573) 751-5515
Director, Plant IndustriesVacant(573) 751-5506
Director, State FairMarion Lucas(660) 530-5600
<i>Missouri State Fair, 2503 W. 26th St., Sedalia 65301</i>		
State StatisticianGene Danekas(573) 876-0950
<i>Missouri Agricultural Statistics Service, PO Box L, Columbia 65205</i>		

State Milk Board

ChairRon Boyer(417) 864-1663
Executive SecretaryTerry Long(573) 751-3830

Missouri Agricultural and Small Business Development Authority

<i>1616 Missouri Blvd., PO Box 630, Jefferson City 65102</i>		
Executive DirectorTony Stafford(573) 751-2129

Department of Conservation

2901 W. Truman Blvd., PO Box 180, Jefferson City 65102-0180
www.mdc.mo.gov

The Department of Conservation, authorized by an amendment to the Constitution, was created for better management of the state's forest, fish and wildlife resources. Since the department funding was increased in 1977 by an addition to the state sales tax, the department has purchased more than 458,500 acres of public land for wildlife, fisheries, forestry conservation and public recreation, and has substantially expanded most programs—most notably conservation education, law enforcement, wildlife services, and activities dealing with endangered species, non-game wildlife and natural areas.

The department is headed by the Conservation Commission, whose four members are appointed by the governor with the advice and consent of the Senate, serving for staggered terms of six years each. The commissioners appoint the department director who, along with three assistant directors, directs programs and activities through the divisions of administrative services, design and development, fisheries, forestry, human resources, outreach and education, private land services, protection, resource science and wildlife.

Conservation Commission

Member	Stephen C. Bradford	(573) 339-1864
Member	Cynthia Metcalfe	(314) 567-3735
Member	William (Chip) McGeehan	(417) 859-6688
Member	Lowell Mohler	(573) 584-9429

Administrative

Director	John D. Hoskins	(573) 522-4115, ext. 3212
Assistant Director - Field	John W. Smith	(573) 522-4115, ext. 3217
Assistant Director - Governmental Relations (legislative liaison)	Bob Ziehmer	(573) 522-4115, ext. 3601
Assistant Director - Public Affairs	Denise Brown	(573) 522-4115, ext. 3216
General Counsel	Tracy McGinnis	(573) 522-4115, ext. 3210
Internal Auditor	Nancy Dubbert	(573) 522-4115, ext. 3522

Division Administrators:

Administrative Services	Carter Campbell	(573) 522-4115, ext. 3606
Design and Development	Bill Lueckenhoff	(573) 522-4115, ext. 3734
Fisheries	Steve Eder	(573) 522-4115, ext. 3174
Forestry	Lisa Allen	(573) 522-4115, ext. 3120
Human Resources	Debbie Strobel	(573) 522-4115, ext. 3225
Outreach and Education	Lorna Domke	(573) 522-4115, ext. 3235
Private Land Services	Bill McGuire (Interim)	(573) 522-4115, ext. 3223
Protection	Dennis Steward	(573) 522-4115, ext. 3258
Resource Science	Dale Humburg	(573) 522-4115, ext. 3191
Wildlife	David W. Erickson	(573) 522-4115, ext. 3142

Department of Corrections

PO Box 236, Jefferson City 65102
www.doc.mo.gov

The Department of Corrections supervises convicted felons and misdemeanants.

Organized as a separate department of state government by an act of the legislature in 1981 and reorganized July 1, 1993, it is comprised of four divisions: Administration/ Human Services, Adult Institutions, Division of Offender Rehabilitative Services, and Probation and Parole. The executive staff includes the department directors, deputy director and division directors.

The Division of Administration/Human Services, consisting of four units, provides support to the divisions of Adult Institutions and Offender Rehabilitative Services, the Board of Probation and Parole and the department's technical staff.

The Division of Adult Institutions oversees the care and custody of inmates in 21 correctional institutions across the state.

The Division of Offender Rehabilitative Services' goal is inmate rehabilitation through the provision of specialized education, job training and treatment programs.

The Board of Probation and Parole consists of seven members, appointed by the governor with the advice and consent of the Senate. They are assisted by four parole analysts who sit with the board on hearings and make recommendations on parole reviews. This division is responsible for the community supervision of offenders.

Office of the Director

Director	Larry Crawford	(573) 526-6607
Deputy Director	David Rost	(573) 526-6607
General Counsel	Daniel Gibson	(573) 522-1634
Public Information Office	Brian Hauswirth	(573) 522-1118
Constituent Services	Lisa Jones	(573) 526-6530
Inspector General	Steve Ahlers	(573) 526-6504
Legislation	Matt Sturm	(573) 526-6499
Victim Services	Kay Crockett	(573) 526-6516

Division of Human Services

Director	Victoria Myers	(573) 526-6472
Human Resources	Richard Enyard	(573) 526-6475
Training and Staff Development	Royce Hudson	(573) 751-4040
Employee Health and Safety	Julie Ives	(573) 526-6518
Religious/Spiritual Programming	Doug Worsham	(573) 526-6489
Volunteer Services	Gordon Howard	(573) 526-6491
General Services	Jay Edwards	(573) 751-6999
Fiscal Management	Lenard Lenger	(573) 526-6441
Budget, Research and Evaluation	Joe Eddy	(573) 522-1207
Planning	Chris Egbert	(573) 526-6587

Division of Offender Rehabilitative Services

Director	Steve Long	(573) 526-6493
Assistant Director, Health Services	Judy Hudson	(573) 526-6498
Assistant Director, Education Services	Tony Spillers	(573) 526-6534
Assistant Director, Substance Abuse Services	Marta Nolin	(573) 526-6545
Chief, Mental Health Services	Mariann Atwell	(573) 526-6523

Administrator, Missouri Vocational Enterprises . . . Wilbur W. Gooch	(573) 751-6663
Reentry Services Julie Boehm	(573) 522-1206
Boonville Treatment Center, <i>PO Box 67, Boonville 65233</i>	
Substance Abuse Unit Supervisor Becky Ehlers	(660) 882-6521
Cremer Therapeutic Community Center, <i>PO Box 70, Fulton 65251</i>	
Superintendent John Bowen	(573) 592-4013
Farmington Treatment Center, <i>1014 W. Columbia, Farmington 63640</i>	
Clinical Director (Vacancy)	(573) 756-8001
Maryville Treatment Center, <i>30227 US Hwy. 136, Maryville 64468-9516</i>	
Superintendent Joe Ledbetter	(660) 582-6542
Clinical Director Gawaine Banks	
Mineral Area Treatment Center, <i>Rt. 2, Box 2222, Mineral Point 63660</i>	
Clinical Director (Vacancy)	(573) 756-8001
Western Region Treatment Center, <i>3401 Faraon, St. Joseph 64506</i>	
Clinical Director Denise Reynolds	(816) 387-2264

Division of Adult Institutions

Director Terry Moore	(573) 526-6524
Assistant Director, Zone I Dana Thompson	(573) 526-6548
Assistant Director, Zone II Tom Clements	(573) 522-1926
Assistant Director, Zone III Patricia Cornell	(573) 526-6532
Assistant to the Director Scott Lawrence	(573) 526-6526
Security Coordinator Bill Schmutz	(573) 522-6526
Central Transfer Authority Charlie Baker	(573) 526-6436

Institutions

Algoa Correctional Center, <i>8501 No More Victims Rd., Jefferson City 65101</i>	
Superintendent Dwayne Kempker	(573) 751-3911
Boonville Correctional Center, <i>1216 E. Morgan, Boonville 65233</i>	
Superintendent Ron Schmitz	(660) 882-6521
Chillicothe Correctional Center, <i>1500 W. Third St., Chillicothe 64601</i>	
Superintendent Jennifer Miller	(660) 646-4032
Crossroads Correctional Center, <i>1115 E. Pence Rd., Cameron 64429</i>	
Superintendent Mike Kemna	(816) 632-2727
Eastern Reception, Diagnostic and Correctional Center, <i>2727 Hwy. K, Bonne Terre 63628</i>	
Acting Superintendent Pat Smith	(573) 358-5516
Farmington Correctional Center, <i>1012 W. Columbia, Farmington 63640</i>	
Superintendent Al Luebbers	(573) 218-7100
Fulton Reception and Diagnostic Center, <i>PO Box 190, Fulton 65251</i>	
Superintendent Stewart Epps	(573) 592-4040
Jefferson City Correctional Center, <i>8200 No More Victims Rd., Jefferson City 65101</i>	
Superintendent Dave Dormire	(573) 751-3224
Missouri Eastern Correctional Center, <i>18701 Hwy. 66, Pacific 63069</i>	
Superintendent Larry Rowley	(636) 257-3322
Moberly Correctional Center, <i>PO Box 7, Moberly 65270</i>	
Superintendent Tony Gammon	(660) 263-3778
Northeast Correctional Center, <i>13698 Pike 46 Airport Rd., Bowling Green 63334</i>	
Superintendent Jim Moore	(573) 324-9975
Ozark Correctional Center (Lease/Purchase), <i>929 Honor Camp Ln., Fordland 65652</i>	
Superintendent Virgil Lansdown	(417) 767-4491

Potosi Correctional Center (Lease/Purchase), 11593 State Hwy. O, Mineral Point 63660	
Superintendent	Don Roper (573) 438-6000
Southeast Correctional Center, 300 E. Pedro Simmons Dr., Charleston 63834	
Superintendent	Troy Steele (573) 683-4409
South Central Correctional Center, 255 Hwy. 32 West, Licking 65542	
Superintendent	Michael Bowersox (573) 674-4470
Tipton Correctional Center, 619 N. Osage Ave., Tipton 65081-8038	
Superintendent	Jill McGuire (660) 433-2031
Western Missouri Correctional Center, 609 E. Pence Rd., Cameron 64429	
Superintendent	Larry Denney (816) 632-1390
Western Reception, Diagnostic and Correctional Center, 3401 Faraon, St. Joseph 64506	
Superintendent IV	William Burgess (816) 387-2158
Women's Eastern Reception, Diagnostic and Correctional Center, PO Box 300, 1101 E. Hwy. 54, Vandalia 63382	
Superintendent	Cyndi Prudden (573) 594-6686

Division of the Board of Probation and Parole

1511 Christy Dr., PO Box 267, Jefferson City 65102, (573) 751-8488

Chair	William Seibert (573) 751-8488
Member	Ansel Card (573) 751-8488
Member	Wayne Crump (573) 751-8488
Member	(Vacancy) (573) 751-8488
Member	Penny Hubbard (573) 751-8488
Member	Robert Robinson (573) 751-8488
Member	Reid Forrester (573) 751-8488
Chief State Supervisor	Scott Johnston (573) 522-1515
Assistant Division Director	Barne Ploch (573) 526-6570
Probation and Parole Administrators	
Central Missouri	Glenn Brucker (636) 940-3333
211 Compass Point, St. Charles 63301	
Eastern Missouri	Nancy McCarthy (314) 877-1176
220 S. Jefferson, St. Louis 63103	
Kansas City Community Release Center	Kim Jones (816) 842-7467
651 Mulberry, Kansas City 64101	
Northwest Missouri	Tom Hodges (660) 530-5530
205 Thompson Rd., Sedalia 65301	
Southeast Missouri	Deborah Cotner (636) 789-3392
4621 Yeager Rd., Hillsboro 63050	
Southwest Missouri	Dardi Smith (417) 895-5700
1735 W. Catalpa, Ste. A, Springfield 65807	
St. Louis Community Release Center	Janet Schneider (314) 877-0300
1621 N. First St., St. Louis 63102	
Western Missouri	Jackie Dunn (816) 792-0793
910 Kent, Liberty 64068	

Department of Economic Development

PO Box 1157, Jefferson City 65102
www.ded.mo.gov

The Department of Economic Development administers a wide array of programs related to job creation and retention, community and workforce development.

Divisions and programs relating to development are Business and Community Service, Tourism, the Missouri Arts Council, the Missouri Housing Development Commission, the Missouri Development Finance Board, Division of Workforce Development and the Women's Council.

The Missouri Public Service Commission and the Office of the Public Counsel are also part of the department.

The department is administered by a director appointed by the governor and confirmed by the Missouri Senate. The director appoints central management staff and principal division directors.

Administrative Services

Truman State Office Building, Rm. 680, PO Box 1157, Jefferson City 65102

Director	Greg Steinhoff	(573) 751-4962
Deputy Director	Spence Jackson	(573) 522-5058
Deputy Director	Mike Mills	(573) 751-3946
Director of Public Affairs	Brian Grace	(573) 751-3946
Director, Administration	Rhonda Meyer	(573) 522-4107
Director, Financial Systems	Judy Gerkhe	(573) 526-7863
Communications Specialist	Keener Tippen	(573) 751-9065

Division of Business and Community Services

Truman State Office Building, Rm. 720, PO Box 118, Jefferson City 65102

Co-Director	Mike Downing	(573) 751-5779
Co-Director	Sallie Hemmenway	(573) 751-8497

Missouri Arts Council

Wainwright State Office Complex, 111 N. Seventh St., Ste. 105, St. Louis 63101

Chair	Michael Vangel	(314) 340-6845
Executive Director	Beverly Strohmeyer	(314) 340-6845

Missouri Development Finance Board

Governor Office Building, 200 Madison St., Ste. 1000, PO Box 567, Jefferson City 65102

Chair	Lt. Governor Peter Kinder	(573) 751-8479
Director	Bob Miserez	(573) 751-8479

Missouri Housing Development Commission

3435 Broadway, Kansas City 64111

Chair	State Treasurer Sarah Steelman	(816) 759-6600
Director	Pete Ramsel	(816) 759-6600

Division of Tourism*Truman State Office Building, Rm. 290, PO Box 1055, Jefferson City 65102*

Chair Lt. Governor Peter Kinder (573) 751-3051
 Director Blaine Luetkemeyer (573) 751-3051

Division of Workforce Development*421 E. Dunklin, PO Box 1087, Jefferson City 65101*

Director Rod Nunn (573) 751-3349

Women's Council*Truman State Office Building, Rm. 680, PO Box 1157, Jefferson City 65102*

Chair Viky Hartzler (573) 751-0810
 Director Mary Cottom (573) 751-0810

Office of Public Counsel*Governor Office Building, 200 Madison St., PO Box 2230, Jefferson City 65102*

Public Counsel Lewis Mills (573) 751-4857

Public Service Commission*Governor Office Building, 200 Madison St., PO Box 360, Jefferson City 65102*

Chair Jeff Davis (573) 751-3234
 Commissioner Linward (Lin) Appling (573) 751-3234
 Commissioner Steve Gaw (573) 751-3234
 Commissioner Robert M. Clayton III (573) 751-3234
 Commissioner Connie W. Murray (573) 751-3234
 Director Wes Henderson (573) 751-3234

Department of Elementary and Secondary Education

PO Box 480, Jefferson City 65102
www.dese.mo.gov

The Department of Elementary and Secondary Education was reorganized and established in its present form by the Omnibus State Reorganization Act of 1974.

The Department of Elementary and Secondary Education is primarily a service agency that works with local school officials and other groups to identify needs within the educational system and to improve educational opportunities and programs for all citizens. Through its regulatory functions, the department strives to assure the effective and efficient operation of state and federal education programs. Under the direction of the State Board of Education, the department is organized with the offices of commissioner of education, deputy commissioner, associate commissioner, and five other divisions, each of which is headed by an assistant commissioner.

The State Board of Education is a lay board consisting of eight members appointed by the governor and confirmed by the Senate. It is vested with the responsibility for the supervision of the public school system in this state and establishes policy in accordance with state and federal law for the department. The board appoints a commissioner of education who serves as chief administrative and executive officer of the department. The commissioner, along with department staff, interprets and implements policies established by the board. The commissioner is assisted by a deputy commissioner, associate commissioner, and assistant commissioners for each of the other five divisions.

State Board of Education

Jefferson State Office Building, 205 Jefferson St., PO Box 480, Jefferson City 65102

President	Peter Hershend	(573) 751-4446
Vice President	Russell V. Thompson	(573) 751-4446
Member	Shirley Langley-Hindman	(573) 751-4446
Member	David Liechti	(573) 751-4446
Member	Deborah Demien	(573) 751-4446
Member	Sybl Slaughter	(573) 751-4446
Member	Rev. Stan Archie	(573) 751-4446
Commissioner of Education	D. Kent King	(573) 751-4446
Executive Assistant to the		
State Board of Education	Jeanne Kujath	(573) 751-4446
Assistant to the Commissioner, Education	Robin Coffman	(573) 751-7602
Deputy Commissioner, Education	Bert Schulte	(573) 751-3503
Associate Commissioner, Division		
of Administrative & Financial Services	Gerri Ogle	(573) 751-2587
Assistant Commissioner, Division		
of School Improvement	Stan Johnson	(573) 751-4234
Assistant Commissioner, Division		
of Career Education	Nancy Headrick	(573) 751-2660
Assistant Commissioner, Division		
of Teacher Quality and Urban Education	Charles Brown	(573) 751-2931

Assistant Commissioner, Division
of Special Education Heidi Atkins Lieberman (573) 751-5739

Assistant Commissioner, Division
of Vocational Rehabilitation Jeanne Loyd (573) 751-3251

Superintendent, State Schools
for Severely Handicapped Charlie Taylor (573) 751-4427

Superintendent, Missouri School for the Blind ... James Sucharski (314) 776-4320
3815 Magnolia Ave., St. Louis 63110

Superintendent, Missouri School for the Deaf ... Barbara Garrison (573) 592-4000
Fulton 65251

Department of Health and Senior Services

912, 920 & 930 Wildwood Dr., PO Box 570, Jefferson City 65102
www.dhss.mo.gov

The Department of Health and Senior Services protects and promotes quality of life and health for all Missourians by developing and implementing programs and systems that provide: information and education, effective regulation and oversight, quality services, and surveillance of diseases and conditions.

The State Board of Health and the State Board of Senior Services advise the department director in planning for departmental activities and acts in an advisory capacity regarding rules promulgated by the Department of Health and Senior Services. Each board consists of seven members appointed by the governor.

The director of the department, appointed by the governor with the advice and consent of the Senate, is the chief liaison officer of the department for joint efforts with other governmental agencies and with private organizations that conduct or sponsor programs that relate to public health in Missouri.

State Board of Health

PO Box 570, Jefferson City 65102

Chair	Donna M. Mannello, D.C	(573) 751-6001
DHSS Liaison	Keri Dozier	(573) 751-6001

State Board of Senior Services

PO Box 570, Jefferson City 65102

Chair	Mary E. Updyke, R.D	(573) 751-6001
DHSS Liaison	Keri Dozier	(573) 751-6001

Office of the Director

PO Box 570, Jefferson City 65102

Director	Jane Drummond	(573) 526-6700
Deputy Director	Nancie McAnagh	(573) 751-6002
Chief, Office of General Counsel	Brendan Cossette	(573) 751-6005
Chief, Office of Governmental Policy and Legislation	Andrew Wankum	(573) 751-6003
Chief, Office of Personnel	Mary Hoskins, MPA	(573) 751-6059
Chief, Office of Public Information	Nanci Gonder	(573) 751-6003
Manager, Employee Disqualification List	Debbie Dean Hansen	(573) 522-1119
Director, State Public Health Laboratory	Eric Blank, Dr.P.H.	(573) 751-3334

307 W. McCarty, Jefferson City 65101

Eastern District Health Office (314) 877-2800
220 S. Jefferson, St. Louis 63103

Northeastern District Health Office (660) 385-3125
708 Patton St., PO Box 309, Macon 63552

Northwestern District Health Office (816) 350-5400
3717 S. Whitney Ave., Independence 64055

Southeastern District Health Office <i>2875 James Blvd, Poplar Bluff 63901</i>	(573) 840-9720
Southwestern District Health Office <i>1414 W. Elfindale, PO Box 777, MPO, Springfield 65801</i>	(417) 895-6900

Center for Emergency Response and Terrorism

PO Box 570, Jefferson City 65102

Center Director	Bruce Clements	(573) 526-4768
Deputy Center Director	Nancy Bush, MBA, MA	(573) 526-4768

Division of Administration

PO Box 570, Jefferson City 65102

Director	Bret Fischer	(573) 751-6014
Chief, Bureau of Budget Services and Analysis	Jim Carlson, MA	(573) 751-6016
Chief, Bureau of Financial Services	Renee Godsey	(573) 751-6024
Chief, Bureau of General Services	Kevin Kolb	(573) 751-6040

Division of Community and Public Health

PO Box 570, Jefferson City 65102

Director	Glenda Miller	(573) 751-6080
Deputy Director	Harold Kirbey	(573) 751-6080
Chief, Office on Women's Health	Tuck VanDyne	(573) 526-0445
Chief, Office of Epidemiology	Bao-Ping Zhu, MD, MS	(573) 751-6128
Interim Chief, Office of Minority Health	Glenda Meachum-Cain	(573) 526-1683
Chief, Office of Primary Care and Rural Health	Betty Nash	(573) 751-6219
Director, Center for Local Public Health Services	Anne Lock	(573) 751-6170
Administrator, Public Health Practice and Administrative Support Section	Scott Clardy	(573) 526-2787
Chief, Bureau of Fiscal Services	Jennifer Duncan	(573) 751-9071
Chief, Bureau of Health Informatics	Nancy Hoffman	(573) 751-6272
Chief, Bureau of Vital Records	Michelle Zeilman	(573) 751-6381
Chief, Office of Community Health Information	Jeanie Bryant	(573) 526-7811
Administrator, Section for Healthy Families and Youth	Melinda Sanders	(573) 751-6253
Chief, Bureau of Genetics and Healthy Childhood	Sharmini Rogers	(573) 751-6266
Chief, Bureau of Special Health Care Needs	Gary Harbison	(573) 751-6246
Administrator, Section for Chronic Disease Prevention and Nutrition Services	Cherrie Bartlett	(573) 522-2800
Chief, Bureau of Health Promotion	Larry Dickerson	(573) 522-2820
Chief, Bureau of Cancer and Chronic Disease Control	Belinda Heimericks	(573) 522-2862
Chief, Bureau of Community Food and Nutrition Assistance Programs	Ann McCormack	(573) 751-6251
Chief, Bureau of WIC and Nutrition Services	Lyn Konstant	(573) 751-6204
Administrator, Section for Disease Control and Environmental Epidemiology	Brad Hall	(573) 751-6141
Chief, Bureau of Environmental Epidemiology	Gale Carlson	(573) 751-6102
Chief, Bureau of HIV, STD, and Hepatitis	Michael Herbert	(573) 751-6439

Chief, Bureau of Communicable Disease Control and Prevention	Harvey Marx	(573) 751-6113
Chief, Bureau of Immunization Assessment and Assurance	Jeannie Ruth	(573) 751-6124
Chief, Environmental Regulations and Licensure Unit	Daryel Brock	(573) 751-6111

Division of Regulation and Licensure

PO Box 570, Jefferson City 65102

Director	David Durbin	(573) 522-1252
Deputy Director	Laurie Hines	(573) 751-6069
Chief, Family Care Safety Registry	Nancy Schulte	(573) 526-1974
Chief, Office of Special Investigation	William Turner	(573) 522-4150
Administrator, Section for Health Standards and Licensure	Dean Linneman	(573) 526-1864
Director, Section for Long Term Care Regulation	Debra Cheshier	(573) 526-8524
State Long Term Care Ombudsman	Carol Scott	(573) 526-0727
State Board of Nursing Home Administrators Chair	C. Michael Roth	(573) 751-6001
Executive Secretary, Board of Nursing Home Administrators	Diana Love	(573) 751-3511
Regional Office #1 <i>149 Park Central Square, Rm. 429, Springfield 65806</i>		(417) 895-6435
Regional Office #2 <i>2875 James Blvd., Poplar Bluff 63901-3395</i>		(573) 840-9580
Regional Office #3 <i>1410 Genessee, Ste. 130, Kansas City 64106</i>		(816) 889-2808
Regional Office #4 <i>207 E. McElwain, PO Box 633, Cameron 64429</i>		(816) 632-6541
Regional Office #5 <i>1716 Prospect, Ste. C, PO Box 472, Macon 63552</i>		(660) 385-5763
Regional Office #6 <i>3418 Knipp Dr., Ste. D, PO Box 915, Jefferson City 65102</i>		(573) 751-2270
Regional Office #7 <i>815 Olive St., Ste. 10, St. Louis 63101</i>		(314) 340-7360
Missouri Health Facilities Review Committee/ Certificate of Need Program		(573) 751-6403

Division of Senior and Disability Services

PO Box 570, Jefferson City 65102

Director	Brenda Campbell, MPA	(573) 526-3626
Deputy Director	Mary Wehrle	(573) 526-3626
Home and Community Services Region #1 <i>149 Park Central Sq., Rm. 819, Springfield 65806</i>		(417) 895-6456
Home and Community Services Region #2 <i>338 Broadway, Ste. 200, Cape Girardeau 63701</i>		(573) 290-5211
Home and Community Services Region #3 <i>815 Olive St., Gallery Ste. #10, St. Louis 63101</i>		(314) 340-3451

Home and Community Services Region #4
525 Jules St., Rm. 319, St. Joseph 64501(816) 387-2104
1410 Genessee, Ste. 130, Kansas City 64106(816) 889-3100

Home and Community Services Region #5(573) 884-6310
1500 Vandiver Dr., Ste. 102, Columbia 65202

Department of Higher Education

3515 Amazonas Dr., Jefferson City 65109
www.dhe.mo.gov

The Missouri Coordinating Board for Higher Education (CBHE) was authorized by an amendment to the Missouri Constitution in 1972 and established by statute in the Omnibus State Reorganization Act of 1974. The nine members are appointed by the governor, confirmed by the Senate, and represent each Missouri congressional district. The board members serve six-year terms; no more than five of the nine members may be affiliated with the same political party. The CBHE's primary goals in statewide planning and coordination are to promote academic quality, to ensure the efficient use of resources, and to provide financial and geographic access to Missouri's system of higher education.

The department is the administrative arm of the CBHE. The functions of the department include statewide planning for post-secondary education, evaluation of student and institutional performance, identification of statewide needs for higher education, development of effective and economical specialization among institutions, submission of a unified budget request for public higher education to the governor and the Missouri General Assembly, review and enhancement of institutional missions, and approval of new degree programs offered at the public colleges and universities. In addition, the department administers a variety of student financial assistance programs, the proprietary school certification program, and the State Anatomical Board.

The board employs a commissioner of higher education to carry out its goals and administrative responsibilities. The state system of higher education includes 13 public four-year colleges and universities, 19 public two-year campuses, 1 public two-year technical college, 25 independent colleges and universities, and 152 proprietary schools.

Coordinating Board for Higher Education

Chair	Kathryn Swan	Cape Girardeau
Vice Chair	Gregory Upchurch	St. Louis
Secretary	Duane Schreimann	Jefferson City
Member	Martha L. Boswell	Columbia
Member	David Cole	Cassville
Member	Lowell C. Kruse	St. Joseph
Member	Jeanne M. Patterson	Belton

Administrative

3515 Amazonas Dr., Jefferson City 65109	FAX (573) 751-6635
Commissioner of Higher Education	Dr. Robert Stein (573) 751-2361
Associate Commissioner - Academic	
Affairs Group	Paul Wagner (573) 751-2361
Assistant Commissioner and General Counsel,	
Director of Missouri Student Loan Group	Dr. James Matchefts (573) 751-2361
Assistant Commissioner - Student Financial	
Assistance, Outreach, and Proprietary School	
Certification	LeRoy Wade (573) 751-2361
Assistant Commissioner - Fiscal Affairs and	
Operations Group	Donna Imhoff (573) 751-2361

Missouri State Anatomical Board

- President Dr. Lex C. Towns (660) 626-2349
Kirkville College of Osteopathic Medicine, A.T. Still University
800 W. Jefferson, Kirksville 63501. E-mail: ltowns@atsu.edu
- Vice President Margaret H. Cooper, Ph.D. (314) 977-8045
Center for Anatomical Science and Education, Department of Surgery
St. Louis University School of Medicine
1402 S. Grand., St. Louis 63104. E-mail: coopermg@slu.edu
- Secretary-Treasurer Dr. Tom C. Scanlon (573) 884-6599
Department of Pathology and Anatomical Sciences, University of Missouri-Columbia
M263, Medical Science Building, Columbia 65212. E-mail: scanlont@health.missouri.edu

Public Institutions of Higher Education**University of Missouri System**

- Interim President Dr. Gordon H. Lamb (573) 882-2011
- University of Missouri-Columbia Dr. Brady Deaton (573) 882-3387
105 Jesse Hall, Columbia 65211 Chancellor
- University of Missouri-Kansas City Dr. Guy H. Bailey (816) 235-1101
5100 Rockhill Rd., Kansas City 64110 Chancellor
- University of Missouri-Rolla Dr. John F. Carney III (573) 341-4116
206 Parker Hall, Rolla 65409-0470 Chancellor
- University of Missouri-St. Louis Dr. Thomas George (314) 516-5252
401 Woods Hall, St. Louis 63121 Chancellor

Colleges and Universities

- University of Central Missouri Dr. Aaron M. Podolefsky (660) 543-4112
Administration 202, Warrensburg 64093 President
- Harris-Stowe State University Dr. Henry Givens Jr. (314) 340-3366
3026 Laclede Ave., St. Louis 63103 President
- Lincoln University Dr. Carolyn Mahoney (573) 681-5000
820 Chestnut, Jefferson City 65101 President
- Missouri Southern State University-Joplin Dr. Julio Leon (417) 625-9501
3950 E. Newman Rd., Joplin 64801-1595 President
- Missouri Western State University Dr. James Scanlon (816) 271-4200
4525 Downs Dr., St. Joseph 64507-2294 President
- Northwest Missouri State University Dr. Dean Hubbard (660) 562-1110
800 University Dr., Maryville 64468-6001 President
- Southeast Missouri State University Dr. Kenneth Dobbins (573) 651-2000
One University Plaza, Cape Girardeau 63701 President
- Missouri State University Dr. Michael T. Nietzel (417) 836-8500
901 S. National Ave., Springfield 65804 President
- Missouri State University-West Plains Dennis Lancaster (417) 255-7255
128 Garfield, West Plains 65775 Acting Chancellor
- Truman State University Dr. Barbara Dixon (660) 785-4000
100 E. Normal, Kirksville 63501-9980 President

Community Colleges

- Crowder College Dr. Steven Gates (417) 451-3223
601 Laclede Ave., Neosho 64850 President
- East Central College Dr. Edward Jackson (636) 583-5193
1964 Prairie Dell Rd., Union 63084 President
- Jefferson College Dr. Wayne H. Watts (636) 797-3000
1000 Viking Dr., Hillsboro 63050-1000 President
- Metropolitan Community Colleges Dr. Jackie Snyder (816) 759-1000
3200 Broadway, Kansas City 64111 Chancellor

Blue River Community College 20301 East 78 Hwy, Independence 64057	Malcolm Wilson President	(816) 220-6550
Business and Technology College 1775 Universal Avenue, Kansas City 64120	Gary Sage President	(816) 482-5250
Longview Community College 500 S.W. Longview Rd., Lee's Summit 64081	Dr. Fred Grogan President	(816) 672-2050
Maple Woods Community College 2601 N.E. Barry Rd., Kansas City 64156-1299	Dr. Merna Saliman President	(816) 437-3050
Penn Valley Community College 3201 Southwest Trafficway, Kansas City 64111	Dr. Bernard Franklin President	(816) 759-4000
Mineral Area College 5270 Flat River Rd., Park Hills 63601	Dr. Steven Kurtz President	(573) 431-4593
Moberly Area Community College 101 College Ave., Moberly 65270	Dr. Evelyn Jorgenson President	(660) 263-4110
North Central Missouri College 1301 Main St., Trenton 64683	Dr. Neil Nuttall President	(660) 359-3948
Ozarks Technical Community College 1001 E. Chestnut Expressway, Springfield 65801	Dr. Hal L. Higdon President	(417) 447-2601
St. Charles Community College 4601 Mid Rivers Mall Dr., St. Peters 63376	Dr. John McGuire President	(636) 922-8000
St. Louis Community College 300 S. Broadway, St. Louis 63102	Dr. Henry Shannon Chancellor	(314) 539-5000
St. Louis Community College at Florissant Valley 3400 Pershall Rd., St. Louis 63135	Marcia Pfeiffer President	(314) 513-4200
St. Louis Community College at Forest Park 5600 Oakland Ave., St. Louis 63110	Morris F. Johnson III President	(314) 644-9743
St. Louis Community College at Meramec 11333 Big Bend Rd., St. Louis 63122	Ann Roberts Divine Acting President	(314) 984-7762
St. Louis Community College at Wildwood 2645 Generations Dr., Wildwood 63040	Pam McIntyre Acting President	(636) 422-2000
State Fair Community College 3201 W. 16th St., Sedalia 65301-2199	Dr. Marsha Drennon President	(660) 530-5800
Three Rivers Community College 2080 Three Rivers Blvd., Poplar Bluff 63901	Dr. John Cooper President	(573) 840-9600

Two-year Technical College

Linn State Technical College One Technology Dr., Linn 65051	Dr. Donald Claycomb President	(573) 897-5000
--	----------------------------------	----------------

Department of Insurance, Financial Institutions and Professional Registration

301 W. High, PO Box 690, Jefferson City 65102-0690
www.difp.mo.gov

The Department of Insurance, Financial Institutions & Professional Registration's primary responsibility is to efficiently and effectively encourage a fair and open market for consumer services industries.

The department was created by executive order effective August 28, 2006. The Department has seven divisions.

The Consumer Affairs Division assists the public in resolving complaints, provides information on insurance policies, investigates insurance fraud and performs education and outreach activities.

The Insurance Solvency & Company Regulation Division monitors and analyzes the financial condition, accounting practices and legal compliance of insurance companies licensed in the state and certifies and collects premium taxes due the state.

The Insurance Market Regulation Division regulates the performance of insurance companies by reviewing policies, rates, products and marketing strategies and monitoring the insurance marketplace to ensure equitable treatment of policyholders.

The Division of Finance executes laws relating to banks, trust companies, savings and loans, consumer credit companies, credit services organizations and money order companies in Missouri to ensure the safety and soundness of financial institutions for Missouri consumers.

The Division of Credit Unions oversees the examination, supervision, chartering, merger and liquidation of credit unions and responds to consumer complaints about credit union services and operations.

The Division of Professional Registration supports 39 professional licensing boards for over 400,000 professional Missourians by processing applications, administering examinations and conducting investigations into possible professional misconduct.

The Resource Administration Division performs department-wide administrative support functions including accounting, budget and information systems coordination. It is also responsible for licensing insurance producers, public adjusters, bail bond agents and surplus lines brokers.

Office of the Director

Director	Doug Ommen	(573) 751-1927
Deputy Director and General Counsel	Larry McCord	(573) 751-1927
Legislative Liaison	Dianna Pell	(573) 526-3587
Communications Director	Emily Kampeter	(573) 526-4845

Consumer Affairs Division

Consumer Toll Free Hotline (800) 726-7390; TT (573) 526-4536

Division Director	Mary Kempker	(573) 751-1923
-------------------	--------------	----------------

Manager, Consumer Affairs	Carol Harden	(573) 751-8887
Manager, Investigations	Kathryn Turner	(573) 751-1922

Insurance Solvency and Company Regulation Division

Chief Examiner/Division Director	Kirk Schmidt	(573) 526-4877
Manager, Financial Analysis	Kim Tones	(573) 526-4912
Manager, Premium Tax	Cynthia Struempf	(573) 751-1929
Manager, Surplus Lines	Lillian Hand	(573) 526-1589

Insurance Market Regulation Division

Division Director	Linda Bohrer	(573) 751-2425
Manager, Market Conduct Examination	Mike Woolbright	(573) 751-2430
Manager, Life and Health	John Korte	(573) 751-4363
Manager, Managed Care	Molly White	(573) 751-4363
Manager, Property and Casualty	Susan Schulte	(573) 751-3365
Manager, Statistics	Brent Kabler	(573) 526-2945

Division of Finance

Truman State Office Building, Rm. 630, PO Box 716, Jefferson City 65102

Chair, State Banking Board	Glen (Brad) Williams	(573) 751-3242
Secretary, State Banking Board	Robert Robuck	(573) 751-3242
Commissioner	D. Eric McClure	(573) 751-3242
Chair, Residential Mortgage Board	Arthur L. Poger	(573) 751-3242

Division of Credit Unions

Truman State Office Building, Rm. 720, Jefferson City 65102

Director	Sandra K. Branson	(573) 751-3419
----------	-------------------	----------------

Licensing Agencies

Division of Professional Registration

3605 Missouri Blvd., PO Box 1335, Jefferson City 65102

Director	David T. Broeker	(573) 751-1081
Director, Financial Services	Sherry Hess	(573) 526-3507
Director, Budget and Legislation	Connie Clarkston	(573) 526-6071
Director, Human Resources	Sandy Sebastian	(573) 526-3557

Missouri State Board of Accountancy

3605 Missouri Blvd., PO Box 613, Jefferson City 65102

President	Ken Clark	(573) 751-0012
Executive Director	Thomas DeGroot	(573) 751-0012

Missouri Board for Architects, Professional Engineers, Professional Land Surveyors and Landscape Architects

3605 Missouri Blvd., PO Box 184, Jefferson City 65102

Chair	James Anderson	(573) 751-0047
Executive Director	Judy Kempker	(573) 751-0047

Office of Athletics

3605 Missouri Blvd., PO Box 1335, Jefferson City 65102

Administrator	Tim Lueckenhoff	(573) 751-0243
Executive Director	Becky Dunn	(573) 751-0243

State Board of Chiropractic Examiners

3605 Missouri Blvd., PO Box 672, Jefferson City 65102

President	Lee Richardson	(573) 751-2104
Executive Director	Loree Kessler	(573) 751-2104

State Committee for Social Workers*3605 Missouri Blvd., PO Box 1335, Jefferson City 65102*

ChairM. Jenise Comer(573) 751-0885
 Executive DirectorTom Reichard(573) 751-0885

Board of Cosmetology and Barber Examiners*3605 Missouri Blvd., PO Box 1062, Jefferson City 65102*

PresidentCindy Bald(573) 751-1052
 Executive DirectorDarla Fox(573) 751-1052

Missouri Dental Board*3605 Missouri Blvd., PO Box 1367, Jefferson City 65102*

PresidentRolfe McCoy(573) 751-0040
 Executive DirectorSharlene Rimiller(573) 751-0040

State Board of Embalmers and Funeral Directors*3605 Missouri Blvd., PO Box 423, Jefferson City 65102*

ChairKenneth McGhee(573) 751-0813
 Executive DirectorBecky Dunn(573) 751-0813

Office of Endowed Care Cemeteries*3605 Missouri Blvd., PO Box 1335, Jefferson City 65102*

ChairHillman Crowell(573) 751-0849
 AdministratorTom Reichard(573) 751-0849

State Board of Registration for the Healing Arts*3605 Missouri Blvd., PO Box 4, Jefferson City 65102*

PresidentMark Tucker(573) 751-0098
 Executive DirectorTina Steinman(573) 751-0098

Board of Examiners for Hearing Instrument Specialists*3605 Missouri Blvd., PO Box 1335, Jefferson City 65102*

ChairErvin Dock(573) 751-0240
 Acting Executive DirectorDana Hoelscher(573) 751-0240

State Board of Nursing*3605 Missouri Blvd., PO Box 656, Jefferson City 65102*

PresidentTeri Murray(573) 751-0681
 Executive DirectorLori Scheidt(573) 751-0681

State Board of Optometry*3605 Missouri Blvd., PO Box 423, Jefferson City 65102*

PresidentChristy Fowler, OD(573) 751-0814
 Executive DirectorSharlene Rimiller(573) 751-0814

State Board of Pharmacy*3605 Missouri Blvd., PO Box 625, Jefferson City 65102*

PresidentDouglas R. Lang, R.Ph.(573) 751-0091
 Executive DirectorDebra Ringgenberg(573) 751-0091

Advisory Commission for Professional Physical Therapists*3605 Missouri Blvd., PO Box 4, Jefferson City 65102*

ChairMelinda Christianson(573) 751-0098
 Executive DirectorTina Steinman(573) 751-0098

State Board of Podiatric Medicine*3605 Missouri Blvd., PO Box 423, Jefferson City 65102*

PresidentDr. Jeffrey Appleman(573) 751-0873
 Executive DirectorBecky Dunn(573) 751-0873

Committee for Professional Counselors*3605 Missouri Blvd., PO Box 1335, Jefferson City 65102*

Chair	Keith Spare	(573) 751-0018
Executive Director	Loree Kessler	(573) 751-0018

Committee of Psychologists*3605 Missouri Blvd., PO Box 1335, Jefferson City 65102*

Chair	Rochelle Harris, Ph.D.	(573) 751-0099
Executive Director	Pam Groose	(573) 751-0099

Real Estate Appraisers' Commission*3605 Missouri Blvd., PO Box 1335, Jefferson City 65102*

Acting Chair	Rick James	(573) 751-0038
Executive Director	Vanessa Beauchamp	(573) 751-0038

Missouri Real Estate Commission*3605 Missouri Blvd., PO Box 1339, Jefferson City 65102*

Chair	Sharon Keating	(573) 751-2628
Executive Director	Janet Carder	(573) 751-2628

Advisory Commission for Speech Pathologists and Clinical Audiologists*3605 Missouri Blvd., PO Box 4, Jefferson City 65102*

Commission Chair	Larry Mazzeo	(573) 751-0098
Executive Director	Tina Steinman	(573) 751-0098

Missouri Veterinary Medical Board*3605 Missouri Blvd., PO Box 633, Jefferson City 65102*

Chair	Linda Hickam-Fountain	(573) 751-0031
Executive Director	Dana Hoelscher	(573) 751-0031

State Committee for Marital and Family Therapists*3605 Missouri Blvd., PO Box 1335, Jefferson City 65102*

Chair	Dr. Elizabeth Kingsley	(573) 751-0870
Executive Director	Loree Kessler	(573) 751-0870

State Committee of Interpreters*3605 Missouri Blvd., PO Box 1335, Jefferson City 65102*

Chair	John Adams	(573) 526-7787
Executive Director	Pam Groose	(573) 526-7787

Board of Geologist Registration*3605 Missouri Blvd., PO Box 1335, Jefferson City 65102*

Chair	John Bogнар	(573) 526-7625
Executive Director	Pam Groose	(573) 526-7625

Missouri Board of Occupational Therapy*3605 Missouri Blvd., PO Box 1335, Jefferson City 65102*

Chair	David Lackey	(573) 751-0877
Executive Director	Vanessa Beauchamp	(573) 751-0877

Missouri Board for Respiratory Care*3605 Missouri Blvd., PO Box 1335, Jefferson City 65102*

Chair	Cindy Seyer	(573) 522-5864
Executive Director	Vanessa Beauchamp	(573) 522-5864

Interior Design Council*3605 Missouri Blvd., PO Box 1335, Jefferson City 65102*

Chair	Beth Harmon-Vaughan	(573) 522-4683
Executive Director	Tom Reichard	(573) 522-4683

State Committee of Dietitians*3605 Missouri Blvd., PO Box 1335, Jefferson City 65102*

Chair	Lois Kramer-Owens	(573) 522-3438
Executive Director	Tom Reichard	(573) 522-3438

Advisory Commission for Massage Therapists*3605 Missouri Blvd., PO Box 1335, Jefferson City 65102*

Chair	Kevin Snedden	(573) 522-6277
Executive Director	Loree Kessler	(573) 522-6277

Missouri Acupuncturist Advisory Committee*3605 Missouri Blvd., PO Box 1335, Jefferson City 65102*

Chair	Jane Van Sant	(573) 526-1555
Executive Director	Loree Kessler	(573) 526-1555

Office of Tattooing, Branding and Body Piercing*3605 Missouri Blvd., PO Box 1335, Jefferson City 65102*

Executive Director	Vanessa Beauchamp	(573) 526-8288
--------------------	-------------------	----------------

Athletic Trainer Advisory Committee*3605 Missouri Blvd., PO Box 4, Jefferson City 65102*

Chair	Ron Dunn	(573) 751-0098
Executive Director	Tina Steinman	(573) 751-0098

Advisory Commission for Clinical Perfusionists*3605 Missouri Blvd., PO Box 4, Jefferson City 65102*

Chair	Mike Phillips	(573) 751-0098
Executive Director	Tina Steinman	(573) 751-0098

Advisory Commission for Registered Physician Assistants*3605 Missouri Blvd., PO Box 4, Jefferson City 65102*

Chair	Lynn Catrett	(573) 751-0098
Executive Director	Tina Steinman	(573) 751-0098

Advisory Commission for Dental Hygienists*3605 Missouri Blvd., PO Box 1367, Jefferson City 65102*

Chair	Debra Adams	(573) 751-0040
Executive Director	Sharlene Rimiller	(573) 751-0040

State Office of Athletic Agents*3605 Missouri Blvd., PO Box 1335, Jefferson City 65102*

Executive Director	Tim Lueckenhoff	(573) 751-0243
--------------------	-----------------	----------------

Missouri Advisory Commission for Anesthesiologist Assistants*3605 Missouri Blvd., PO Box 4, Jefferson City 65102*

Chair	James Kelly Jr, MD	(573) 751-0098
Executive Director	Tina Steinman	(573) 751-0098

Resource Administration Division

Division Director	Rochelle Hendrickson	(573) 751-1927
Manager, Human Resources	Keith Dudenhoeffer	(573) 751-6798
Manager, Support Services	Shirley Gerling	(573) 751-1942

Missouri Roster

Budget Officer	Grady Martin	(573) 751-7223
Manager, Licensing	Matt Barton	(573) 751-3518
Manager, Information Systems	Tim Dwyer	(573) 751-1952

Department of Labor and Industrial Relations

421 E. Dunklin St., Jefferson City 65102-0504, (573) 751-4091, FAX: (573) 751-4135
www.dolir.mo.gov

The Missouri Department of Labor and Industrial Relations is responsible for administering programs that: provide an income for workers to offset the loss of a job due to an injury or layoff; conduct employee representation elections for public bodies; regulate minimum wage and wages for public works and construction projects; promote safe working environments; enforce Missouri's anti-discrimination statutes and protect Missouri citizens in the areas of housing, employment and public accommodations.

Agencies operating within the department are: Labor and Industrial Relations Commission; Division of Employment Security; Division of Workers' Compensation; Division of Labor Standards; and Missouri Commission on Human Rights.

The Labor Commission consists of three members, appointed by the governor and confirmed by the Senate. As part of their duties, the commission hears appeals from all decisions and awards in workers' compensation and unemployment compensation, makes determinations in prevailing wage and victims of crime compensation cases, and determines an appropriate bargaining unit of public employees.

The director of the Department of Labor and Industrial Relations is nominated by the commission and appointed by the governor, subject to the advice and consent of the Senate, to be the chief administrative officer of the department.

Labor and Industrial Relations Commission

3315 W. Truman Blvd., PO Box 599, Jefferson City 65102-0599

Chair William F. Ringer (573) 751-2461
Commissioner (Employee representative) John J. Hickey (573) 751-2461
Commissioner (Employer representative) Alice A. Bartlett (573) 751-2461

Office of the Director

421 E. Dunklin St., PO Box 504, Jefferson City 65102-0504

Director Nimrod (Rod) Chapel Jr. (573) 751-9691
Deputy Director (Vacancy) (573) 751-9691

Division of Employment Security

421 E. Dunklin St., PO Box 59, Jefferson City 65104-0059

Director Katharine Barondeau (573) 751-8086

Division of Labor Standards

3315 W. Truman Blvd., PO Box 449, Jefferson City 65102-0449

Director Allen Dillingham (573) 751-3403

Division of Workers' Compensation

3315 W. Truman Blvd., PO Box 58, Jefferson City 65102-0058

Director Patricia (Pat) Secrest (573) 751-4231

Missouri Commission on Human Rights

3315 W. Truman Blvd., PO Box 1129, Jefferson City 65102-1129

Executive Director (Vacancy) (573) 751-3325

Department of Mental Health

1706 E. Elm St., PO Box 687, Jefferson City 65102
www.dmh.mo.gov

The Department of Mental Health was established as a cabinet-level state agency by the Omnibus State Reorganization Act of 1974.

The department's mission as specified by law is: to prevent mental disorders, developmental disabilities and substance abuse; to treat, habilitate and rehabilitate Missourians who suffer from those conditions; and to improve public understanding and attitudes about mental disorders, developmental disabilities and substance abuse.

The principal policy advisor to the department is the seven-member Mental Health Commission, a citizen commission that appoints the director with the confirmation of the Senate. The director is responsible for overall operations of the department, its three operating divisions, five support offices, facilities and central office.

Mental Health Commission

Chair	John Constantino, MD	St. Louis
Secretary	George Gladis	St. Louis
Member	Patricia Bolster, MD	St. Louis
Member	Phillip McClendon	Joplin
Member	Ron Dittimore, EdD	St. Joseph

Administrative

1706 E. Elm St., PO Box 687, Jefferson City 65102

(573) 751-4122, (800) 364-9687, FAX (573) 526-8224, TT (573) 526-1201

Director	Keith Schafer	(573) 751-3070
Deputy Director	Lynn Carter	(573) 526-3691
Assistant to the Director	Monica Hoy	(573) 751-6686
Administrative Assistant	Cathy Welch	(573) 751-4970
Deputy Director, Administration	Patty Henry	(573) 751-8144
Director, Human Resources	Patrick Murphy	(573) 751-8562
Director, Public Affairs	Bob Bax	(573) 751-4423
Director, Investigations	Gus Epple	(573) 751-8049
Director, Information Systems	Gary Lyndaker	(573) 751-9121
Director, Psychiatry/Medical Director	Joseph Parks, MD	(573) 751-2794
Legislative Liaison	Bob Bax	(573) 751-8033
General Counsel	Mary Tansey	(573) 751-8091
Director, Consumer Affairs	Leigh Gibson	(573) 751-8093

Division of Alcohol and Drug Abuse

(573) 751-4942, FAX (573) 751-7814, TT (573) 751-4942

Director	Mark Stringer	(573) 751-9499
Deputy Division Director	(Vacancy)	(573) 751-4942
Deputy Division Director of Administration	Marsha Buckner	(573) 751-4942

Missouri Advisory Council on Alcohol and Drug Abuse

Chair	Robin Hammond	(816) 232-0050
	625 Francis, St. Joseph 64501	
Vice Chair	Daniel Clark	(417) 782-6700
	3829 South Duquesne, Joplin 64804	

Division of Comprehensive Psychiatric Services*(573) 751-8017, FAX (573) 751-7815, TT (573) 751-8017*

Director	Joseph Parks, MD	(573) 751-3035
Chief Operating Officer	Felix Vincenz, PhD	(573) 751-9482
Director, Administration and Quality Management	Steve Reeves	(573) 522-1324
Director, Forensic Services	Richard Gowdy, Ph.D.	(573) 751-9647

Hospital Systems**Central Area***600 E. Fifth St., Fulton 65251*

Acting Chief Executive Officer	Bob Reitz, Ph.D.	(573) 592-3412
Administrative Assistant	Ceri Stevens	(573) 592-3412

Fulton State Hospital*600 E. Fifth St., Fulton 65251, TT (573) 592-3498*

Chief Operating Officer	Marty Martin	(573) 592-4100
Administrative Assistant	Rickie Gohring	(573) 592-4100
Chief Financial Officer	Ken Lyle	(573) 592-4100
Medical Director	Judy Fisher, DO	(573) 592-4100
Human Resource Manager	Lori Hollinger	(573) 592-4100
Quality Improvement Office	Andy Atkinson	(537) 592-4100

Mid-Missouri Mental Health Center*#3 Hospital Dr., Columbia 65201, TT (573) 884-1213*

Acting Chief Operating Officer	Marla Smith	(573) 884-1300
Administrative Assistant	Nancy Rapp	(573) 884-1300
Chief Financial Officer	Ken Lyle	(573) 592-4100
Medical Director	Ron Lacey, MD.	(573) 884-1300
Human Resource Manager	Lori Hollinger	(573) 592-4100
Quality Improvement Officer	Andy Atkinson	(573) 592-4100

Southwest Missouri Psychiatric Rehabilitation Center*1301 Industrial Parkway E., El Dorado Springs 64744, TT (417) 876-2604*

Chief Operating Officer	Denise Norbury	(417) 876-1002
Administrative Assistant	Connie Esry	(417) 876-1002
Chief Financial Officer	Ken Lyle	(573) 592-4100
Medical Director	Jhansirani Vasireddy, MD	(417) 876-1002
Human Resource Manager	Lori Hollinger	(573) 592-4100
Quality Improvement Officer	Andy Atkinson	(573) 592-4100

Eastern Area*5300 Arsenal St., St. Louis 63139*

Chief Executive Officer	Laurent Javois	(314) 877-5981
Administrative Assistant	Kathy Moehrle	(314) 877-5981

St. Louis Psychiatric Rehabilitation Center*5300 Arsenal St., St. Louis 63139, TT (314) 877-6503*

Chief Operating Officer	Curt Trager	(314) 877-6500
Administrative Assistant	Roena Whitt	(314) 877-6500
Chief Financial Officer	Laura Wayer	(314) 877-6500
Medical Director	Lori DeRosear, DO	(314) 877-6500
Human Resource Manager	Ronald Moore	(314) 877-6500
Quality Improvement Officer	Cary Drennen	(314) 877-6500

Metropolitan St. Louis Psychiatric Center*5351 Delmar, St. Louis 63112, TT (314) 877-0775*

Chief Operating Officer	Anthony Cuneo	(314) 877-0500
Administrative Assistant	Colette Strickland	(314) 877-0500
Chief Financial Officer	Laura Wayer	(314) 877-0500
Medical Director	Rakhshanda Hassan, MD	(314) 877-0500
Human Resource Manager	Ronald Moore	(314) 877-6500
Quality Improvement Officer	Cary Drennen	(314) 877-6500

Hawthorn Children's Psychiatric Hospital*1901 Pennsylvania Ave., St. Louis 63133, TT (314) 512-7800*

Chief Operating Officer	Marcia Perry	(314) 512-7800
Administrative Assistant	Carolyn Huntington	(314) 512-7800
Chief Financial Officer	Laura Wayer	(314) 877-6500
Medical Director	Syed Tahir Rizvi, MD	(314) 512-7800
Human Resource Manager	Ronald Moore	(314) 877-6500
Quality Improvement Officer	Cary Drennen	(314) 877-6500

Southern Area*1010 W. Columbia, Farmington 63640*

Chief Executive Officer	Karen Adams	(573) 218-6792
Administrative Assistant	Rita Boyd	(573) 218-6792

Southeast Missouri Mental Health Center*1010 W. Columbia, Farmington 63640, TT (573) 218-7018*

Chief Operating Officer	Melissa Ring, Ph.D.	(573) 218-6792
Administrative Assistant	Cindy Forsythe	(573) 218-6792
Chief Financial Officer	Julie Inman	(573) 218-6792
Medical Director	Jay Englehart, MD	(573) 218-6792
Human Resource Manager	Mark Remspecher	(573) 218-6792
Quality Improvement Officer	Dave Schmitt	(573) 218-6792

Missouri Sexual Offender Treatment Center*1016 W. Columbia, Farmington 63640*

Chief Operating Officer	Alan Blake	(573) 218-7045
Administrative Assistant	Sheila Light	(573) 218-7045
Chief Financial Officer	Julie Inman	(573) 218-6792
Medical Director	(Vacancy)	
Clinical Director	Marty Bellew-Smith, MD	(573) 218-7045
Human Resource Manager	Mark Remspecher	(573) 218-6792
Quality Improvement Officer	Dave Schmitt	(573) 218-6792

Cottonwood Residential Treatment Center*1025 N. Sprigg St., Cape Girardeau 63701*

Chief Operating Officer	Martha Cassel	(573) 290-5888
Chief Financial Officer	Julie Inman	(573) 218-6792
Human Resource Manager	Mark Remspecher	(573) 218-6792
Quality Improvement Officer	Dave Schmitt	(573) 218-6792

Western Area*1000 E. 24th St., Kansas City 64108*

Chief Executive Officer	Dick Gregory, Ph.D.	(816) 512-7510
Administrative Assistant	Barbara Johnson	(816) 512-7510

Northwest Missouri Psychiatric Rehabilitation Center*3505 Frederick St., St. Joseph 64506, (816) 387-2595*

Chief Operating Officer	Mary Attebury	(816) 387-2300
Administrative Assistant	Diane Hargrave	(816) 387-2300
Chief Financial Officer	Scott Carter	(816) 512-7000
Medical Director	James Reynold, MD	(816) 387-2300
Human Resource Manager	Silva Ward	(816) 512-7000
Quality Improvement Officer	Kaye Green	(816) 512-7509

Western Missouri Mental Health Center*1000 E. 24th St., Kansas City 64108, TT (800) 955-8339*

Chief Operating Officer	Deb Birmingham	(816) 512-7000
Administrative Assistant	Barbara Johnson	(816) 512-7000
Chief Financial Officer	Scott Carter	(816) 512-7000
Medical Director	Rob Hornstra, MD	(816) 512-7000
Human Resource Manager	Silva Ward	(816) 512-7000
Quality Improvement Officer	Kaye Green	(816) 512-7000

Missouri Advisory Council on Comprehensive Psychiatric Services

Chair	Robert Qualls	(417) 880-1247
<i>2835 S. Fort, #1404, Springfield 65807</i>		
Vice Chair	Geody Frazier	(816) 231-5226
<i>2541 Van Burnt Blvd., Kansas City 64127</i>		

Division of Mental Retardation and Developmental Disabilities*(573) 751-4054, FAX (573) 751-9207, TT (573) 751-8217*

Director	Bernard Simons	(573) 751-8676
Deputy Division Director	Tec Chapman	(573) 751-8667
Deputy Division Director Administrative Services	Jeff Grosvenor	(573) 751-8678

Missouri Planning Council for Developmental Disabilities*PO Box 687, Jefferson City 65102*

Chair	Terry Mack	(573) 751-8611
Director	Susan Pritchard-Green	(573) 751-8611

Habilitation Centers**Higginsville Habilitation Center***Morris Dr., PO Box 517, Higginsville 64037, FAX (660) 584-6244, TT (660) 584-4819*

Superintendent	April Maxwell	(660) 584-4800
Administrative Assistant	Cheryl Kilpatrick	(660) 584-4824
Assistant Superintendent (Administration)	Sherry Meyer	(660) 584-4800

Marshall Habilitation Center*Slater St., PO Box 190, Marshall 65340, FAX (660) 886-3047, TT (660) 886-6929*

Superintendent	Mary Fangmann	(660) 886-2202
Administrative Assistant/Secretary	Marlene Van Horn	(660) 886-2202
Administrative Assistant/Secretary	Liz Elson	(660) 886-2202
Assistant Superintendent (Habilitation)	Karen Moss	(660) 886-2202

Bellefontaine Habilitation Center*10695 Bellefontaine Rd., St. Louis 63137, FAX (314) 340-6199, TT (314) 340-6000*

Superintendent	Jim Finch	(314) 340-6011
Administrative Assistant/Secretary	Sharon Payne	(314) 340-6011
Business Manager	William Heuvelman	(314) 340-6065
Assistant Superintendent (Habilitation)	Becky Post	(314) 340-6031

Nevada Habilitation Center

2323 N. Ash, Nevada 64772, FAX (417) 448-2138, TT (417) 448-2302

Superintendent	Chris Baker	(417) 448-1124
Administrative Assistant/Secretary	Bobbie Jones	(417) 448-1124
Assistant Superintendent (Administration)	Pat Moomaw	(417)-448-1150
Assistant Superintendent (Habilitation)	(Vacancy)	(417)-448-1150

Southeast Missouri Residential Services

PO Box 460, Poplar Bluff 63902, FAX-PB (573) 840-9373, FAX-SIKE (573) 472-6588, TT (573) 840-9312

Superintendent	Tony Harris (Poplar Bluff)	(573) 840-9370
Superintendent	Tony Harris (Sikeston)	(573) 472-6555
Administrative Assistant/Secretary	Skye Murray (Poplar Bluff)	(573) 840-9375
Administrative Assistant/Secretary	Rhonda Smith (Sikeston)	(573)-472-6559

St. Louis Developmental Disabilities Treatment Center

211 N. Lindbergh, St. Louis 63141-7809, FAX (314) 340-6724, TT (314) 340-6659

Superintendent	Jim Finch	(314) 340-6701
Administrative Assistant/Secretary	Mindy Boehringer	(314) 340-6701
Assistant Superintendent (Administration)	Wanda Elliot	(314) 340-6715
Assistant Superintendent (Habilitation)	Noal Presley	(314) 340-6714

Northwest Habilitation Center

11 Brady Circle, West Overland 63114, FAX (314) 877-5660

Unit Manager	Ira Jones	(314) 877-5650
--------------	-----------	----------------

St. Charles Habilitation Center

22 Marr Ln., St. Charles 63303, FAX (636) 926-1309

Unit Manager	Mary Watts	(636) 926-1300
--------------	------------	----------------

South County Habilitation Center

2312 Lemay Ferry Rd., St. Louis 63126, (314) 894-5440

Unit Manager	Sandra Olsen	(314) 894-5400
--------------	--------------	----------------

Regional Centers**Albany Regional Center**

809 N. 13th, Albany 64402, FAX (660) 726-5612, TT (660) 726-5844

Acting Director	Gail Clair	(660) 726-5246
Administrative Assistant/Secretary	Connie Nail	(660) 726-1528
Assistant Director (Habilitation)	Gary Davis	(660) 726-1526

Central Missouri Regional Center

1500 Vandiver Drive, Ste. 100, Columbia 65203, FAX (573) 884-4294, TT (573) 882-9835

Director	Marcy Volner	(573) 882-9835
Administrative Assistant/Secretary	Karen Alexander	(573) 882-9835
Assistant Director (Habilitation)	Lisa Turner	(573) 882-9835

Hannibal Regional Center

805 Clinic Rd., PO Box 1108, Hannibal 63401, FAX (573) 248-2408, TT (573) 248-2415

Director	Linda Bowers	(573) 248-2400
Administrative Assistant	Mary Schafer	(573) 248-2400
Assistant Director (Habilitation)	Lois Warren	(573) 248-2400

Joplin Regional Center

3600 E. Newman Rd., PO Box 1209, Joplin 64802-1209, FAX (417) 629-3026, TT (417) 629-4290

Director	Kathleen Featherstone	(417) 629-3020
Administrative Assistant/Secretary	Cathy Seely	(417) 629-3020
Assistant Director (Administration)	Doris Obradovich	(417) 629-3020
Assistant Director (Habilitation)	Penny Moorehouse-Coates	(417) 629-3020

Kansas City Regional Center

821 E. Admiral Blvd., PO Box 412557, Kansas City 64106, FAX (816) 889-3325, TT (816) 889-3326

Director	Jerry Carpenter	(816) 889-3420
Administrative Assistant/Secretary	Patty Colling	(816) 889-3420
Assistant Director (Administration)	Jerry Carpenter	(816) 889-3419
Assistant Director (Habilitation)	Linda Ward	(816) 889-3484

Kirksville Regional Center

1702 E. LaHarpe St., Kirksville 63501, FAX (660) 785-2520, TT (660) 785-2500

Director	Linda Bowers	(660) 785-2500
Administrative Assistant/Secretary	Debbie Lee	(660) 785-2500
Assistant Director (Habilitation)	(Vacancy)	(660) 785-2500

Poplar Bluff Regional Center

PO Box 460, Poplar Bluff 63902, FAX (573) 840-9311, TT (573) 840-9312

Director	Kim Crites	(573) 840-9300
Administrative Assistant/Secretary	Doris Brandon	(573) 840-9300
Assistant Director (Administration)	Pat Golden	(573) 840-9300

Rolla Regional Center

105 Fairgrounds Rd., PO Box 1098, Rolla 65402, FAX (573) 368-2206, TT (573) 368-2200

Director	Marcy Volner	(573) 368-2200
Administrative Assistant/Secretary	Nancy Fields	(573) 368-2200
Assistant Director (Habilitation)	Randy Havens	(573) 368-2200

Sikeston Regional Center

112 Plaza Dr., PO Box 966, Sikeston 63801, FAX (573) 472-1354, TT (573)-472-5391

Director	Kim Crites	(573) 472-5300
Administrative Assistant/Secretary	Pat Jones	(573) 472-5300
Assistant Director (Administration)	Pat Golden	(573) 472-5300
Assistant Director (Habilitation)	Terry Regenold	(573) 472-5300

Springfield Regional Center

1515 E. Pythian, PO Box 5030, Springfield 65801-5030, FAX (417) 895-7412, TT (417) 895-7430

Director	Kathleen Featherstone	(417) 895-7400
Administrative Assistant/Secretary	LaDonna Morris	(417) 895-7400
Assistant Director (Administration)	Doris Obradovich	(417) 895-7400
Assistant Director (Habilitation)	Becky Dodds	(417) 895-7400

St. Louis Regional Center–North

211 N. Lindbergh, St. Louis 63141, FAX (314) 340-6598, TT (314) 340-6500

Executive Director	Anita Contreras	(314) 340-6703
Administrative Assistant/Secretary	Naomi Lebsock	(314) 340-6614
Business Manager	Wanda Elliott	(314) 340-6715

St. Louis Regional Center–South

Campbell Plaza, 59th & Arsenal St., Ste. 1-B, St. Louis 63139, FAX (314) 877-0079, TT (314) 877-0000

Executive Director	Cindy Mueller	(314) 877-0019
Administrative Assistant/Secretary	Teresa Demis	(314) 877-0010
Business Manager	Barbara Vineyard	(314) 224-8939

Department of Natural Resources

1101 Riverside Dr., PO Box 176, Jefferson City 65102
www.dnr.mo.gov

The mission of the Department of Natural Resources is to preserve, protect and enhance Missouri's natural, cultural and energy resources. The department ensures that Missourians enjoy clean air to breathe, clean water for drinking and recreation, land that sustains a diversity of life and sustainable energy choices. The agency accomplishes this work through the Division of Environmental Quality, the Division of Geology and Land Survey, the Division of State Parks and the Field Services Division. The department's Division of Administrative Support provides department-level administrative and management support.

The Department of Natural Resources was created in 1974. The department is managed by a director who is directly responsible to the governor.

Director	Doyle Childers	(573) 751-4732
Deputy Director	Jeff L. Staake	(573) 522-8796
Policy Director and Legislative Affairs	Floyd Gilzow	(573) 751-3195
Chief of Water Resources	Mike Wells	(573) 751-4732
General Counsel	Kurt Schaefer	(573) 751-0323

Energy Center

1101 Riverside Dr., PO Box 176, Jefferson City 65102

Director	Anita Randolph	(573) 751-2254
----------	----------------	----------------

Soil and Water Conservation Program

1101 Riverside Dr., PO Box 176, Jefferson City 65102

Interim Director	Bill Foster	(573) 751-4932
------------------	-------------	----------------

Soil and Water Districts Commission

1101 Riverside Dr., PO Box 176, Jefferson City 65102

Chair, Fayette	Elizabeth Brown	(573) 751-4932
Vice Chair, Memphis	Leon Kreisler	(573) 751-4932
Staff Director	Bill Foster	(573) 751-4932

Water Resources Center

1101 Riverside Dr., PO Box 176, Jefferson City 65102

Director	Ryan Mueller	(573) 751-2867
----------	--------------	----------------

Dam and Reservoir Safety Council

111 Fairgrounds Rd., PO Box 250, Rolla 65401

Chair, St. Louis	Richard Frueh	(573) 368-2175
Vice Chair, Rolla	Jeffrey Cawlfild	(573) 368-2175
Staff Director	Jim Alexander	(573) 368-2175

Administrative Support

1101 Riverside Dr., PO Box 176, Jefferson City 65102

Director	LaVerne Brondel	(573) 751-7961
----------	-----------------	----------------

Environmental Improvement and Energy Resources Authority

325 Jefferson St., PO Box 744, Jefferson City 65102

Chair	William Worley	(573) 751-4919
Vice Chair	Jerome Govero	(573) 751-4919
Director	Thomas Welch	(573) 751-4919

Minority Environmental Literacy Advisory Committee

1101 Riverside Dr., PO Box 176, Jefferson City 65102

Chair	Doyle Childers	(573) 751-4732
Staff Contact	Resa Dudley	(573) 751-8317

Petroleum Storage Tank Insurance Fund Board

830 E. High St., Ste. B, PO Box 836, Jefferson City 65102

Chair	Don McNutt	(573) 522-2352
Vice Chair	James Ford	(573) 522-2352
Executive Director	Carol Eighmey	(573) 522-2352

Division of Environmental Quality

1101 Riverside Dr., PO Box 176, Jefferson City 65102

Director	Dan Schuette	(573) 751-0763
Deputy Director	Earl Pabst	(573) 751-0763
Deputy Director	Leanne Tippett Mosby	(573) 751-0763

Air Conservation Commission

1659 E. Elm, PO Box 176, Jefferson City 65102

Chair, <i>St. Louis</i>	Michael Foresman	(573) 526-4679
Vice Chair, <i>Hannibal</i>	Mark Fohey	(573) 526-4679
Staff Director	Jim Kavanaugh	(573) 526-4679

Clean Water Commission

1101 Riverside Dr., PO Box 176, Jefferson City 65102

Chair, <i>Ballwin</i>	Thomas Herrmann	(573) 751-6721
Vice Chair, <i>Bowling Green</i>	Kristin Perry	(573) 751-6721
Staff Director	Edward Galbraith	(573) 751-6721

Hazardous Waste Management Commission

1738 E. Elm, PO Box 176, Jefferson City 65102

Chair, <i>Webster Groves</i>	Patrick Gleason	(573) 751-2747
Vice Chair, <i>Wildwood</i>	Tim Warren	(573) 751-2747
Staff Director	Robert Geller	(573) 751-2747

Land Reclamation Commission

1101 Riverside Dr., PO Box 176, Jefferson City 65102

Chair, <i>St. James</i>	James DiPardo	(573) 751-4041
Co-Chair, <i>Maryville</i>	Gregory Haddock, Ph.D	(573) 751-4041
Staff Director	Larry Coen	(573) 751-4041

Safe Drinking Water Commission

1101 Riverside Dr., PO Box 176, Jefferson City 65102

Chair, <i>Springfield</i>	Elizabeth Grove	(573) 751-5331
Vice Chair, <i>Stoutsville</i>	Larry Meng	(573) 751-5331
Staff Contact	Steve Sturgess	(573) 751-5331

Small Business Compliance Advisory Committee

1659 E. Elm, PO Box 176, Jefferson City 65102

Chair	T. Robin Cole	(573) 751-4817
Vice Chair, <i>Excelsior Springs</i>	Roger Archibald	(573) 751-4817
Staff Contact	Lucy Thompson	(573) 751-4817

Solid Waste Advisory Board*1738 E. Elm, PO Box 176, Jefferson City 65102*

Chair, <i>Springfield</i>	Tim Smith	(573) 526-3900
Vice Chair, <i>Webb City</i>	Harry Rogers	(573) 526-3900
Staff Contact	Jim Hull	(573) 526-3900

Well Installation Board*1101 Riverside Dr., PO Box 176, Jefferson City 65102*

Chair, <i>Steele</i>	Robert Lawrence	(573) 751-5331
Vice Chair, <i>Buffalo</i>	Fred Schoen	(573) 751-5331
Staff Contact	Steve Sturgess	(573) 751-5331

Division of Geology and Land Survey*111 Fairgrounds Rd., PO Box 250, Rolla 65401*

Director and State Geologist	Mimi Garstang	(573) 368-2101
Deputy Director	Bill Duley	(573) 368-2101

Land Survey Advisory Committee*111 Fairgrounds Rd., PO Box 250, Rolla 65401*

Chair, <i>Hermann</i>	Paul Dopuch, PLS	(573) 368-2300
Staff Director	J. Michael Flowers	(573) 368-2300

State Oil and Gas Council*111 Fairgrounds Rd., PO Box 250, Rolla 65401*

Chair, <i>Rolla</i>	Dr. Shari Dunn-Norman	(573) 368-2149
Vice Chair, <i>Jefferson City</i>	Ed Galbraith	(573) 751-6721
Staff Contact	Joe Gillman	(573) 368-2149

Division of State Parks*1659 E. Elm, PO Box 176, Jefferson City 65102*

Director	Doug Eiken	(573) 751-9392
Deputy Director	Wynonna McClammer	(573) 751-9392
Deputy Director	Dan Paige	(573) 522-5655

Missouri Advisory Council on Historic Preservation*1101 Riverside Dr., PO Box 176, Jefferson City 65102*

Chair, <i>Kansas City</i>	Greg Allen	(573) 751-7858
Vice Chair, <i>Fayette</i>	Dr. Robert Wiegers	(573) 751-7858
Staff Director	Mark Miles	(573) 751-7858

Missouri State Park Advisory Board

Chair, <i>Webster Groves</i>	Jeanne Kirkton	(573) 751-9392
Vice Chair, <i>Springfield</i>	Larry Russell	(573) 751-9392

State Inter-Agency Council for Outdoor Recreation*1101 Riverside Dr., PO Box 176, Jefferson City 65102*

Chair	Doyle Childers	(573) 751-4732
-------------	----------------------	----------------

Unmarked Human Burial Consultation Committee*1101 Riverside Dr., PO Box 176, Jefferson City 65102*

Chair	Doyle Childers	(573) 751-4732
-------------	----------------------	----------------

Field Services Division

1101 Riverside Dr., PO Box 176, Jefferson City 65102

Director	Jim Macy	(573) 526-5804
Deputy Director	Adam Gresham	(573) 526-5804
Deputy Director	Bruce Martin	(573) 526-5804

Department of Public Safety

Truman State Office Building, PO Box 749, Jefferson City 65102-0749, FAX (573) 751-5399
www.dps.mo.gov

The Department of Public Safety is responsible for coordinating all elements of law enforcement, criminal investigation and public safety activities undertaken by state government, the ultimate goal being to ensure the safety and security of Missouri's citizens and their property. This is accomplished through the activities of the Missouri Veterans' Commission; Division of Alcohol and Tobacco Control; Missouri State Water Patrol; Division of Fire Safety; Missouri State Highway Patrol; Missouri Capitol Police; Missouri Gaming Commission; Office of the Adjutant General (Missouri National Guard); and the State Emergency Management Agency.

Established by the Omnibus State Reorganization Act of 1974, the department consisted of a small central staff and seven divisions which reported directly to the governor. Since then significant changes have occurred. The department is now responsible for 3,600 employees and a budget of more than \$200 million.

The department is under the supervision of a director, appointed by the governor with the advice and consent of the Senate.

Director	Mark James	(573) 751-5432
Executive Secretary	Margaret Bilyeu	(573) 751-5432
Deputy Director	Brian Jamison	(573) 751-5432
General Counsel	Jill LaHue	(573) 751-5432
Homeland Security	Paul Fennewald	(573) 522-3007
Narcotics Control	Eric Shepherd	(573) 751-4905
Juvenile Justice	Sandy Remppe	(573) 751-4905
Victims' Services	Patty Peiffer	(573) 751-4905
Victims of Crime	Marc Peoples	(573) 751-4905
Peace Officer Training	Jeremy Spratt	(573) 751-4905
Budget	Tom Orf	(573) 751-4905
Personnel	Mary Snyder	(573) 751-4905
Legislation	David Scott	(573) 751-4905
Communications	Teresa Durdaller	(573) 751-5432

Missouri Veterans' Commission

205 Jefferson St., PO Drawer 147, Jefferson City 65102-0147, FAX (573) 751-6836

Executive Director	Hal J. Dulle	(573) 751-3779
Executive Secretary	Jill Talken	(573) 522-1422
Deputy Director	Larry Kay	(573) 522-1402
Superintendent of Homes	Anne Payne	(573) 522-1409
Director, Service to Veterans	Stan Baughn	(573) 522-1411

Missouri Veterans' Homes

Administrator, St. James Veterans' Home 620 N. Jefferson, St. James 65559-1999	Patty Faenger	(573) 265-3271
Administrator, Mt. Vernon Veterans' Home 600 N. Main, Mt. Vernon 65712-1098	Don Long	(417) 466-7103
Administrator, Mexico Veterans' Home #1 Veterans' Dr., Mexico 65265-0473	Cheryl Tolbert	(573) 581-1088

Administrator, Cape Girardeau Veterans' Home	Jan Rau	(573) 290-5870
<i>2400 Veterans' Memorial Dr., Cape Girardeau 63701</i>		
Administrator, St. Louis Veterans' Home	Michael Barth	(314) 340-6389
<i>10600 Lewis & Clark Blvd., St. Louis 63136</i>		
Administrator, Cameron Veterans' Home	Celia Reed	(816) 632-6010
<i>1111 Euclid, Cameron 64429</i>		
Administrator, Warrensburg Veterans' Home	Eric Endsley	(660) 543-5064
<i>1300 Veterans' Rd., Warrensburg 64093</i>		

Missouri Veterans' Cemeteries

Acting Director, Springfield State Veterans' Cemetery	Chuck Wooten	(417) 823-3944
<i>5201 S. Southwood Dr., Springfield 65804</i>		
Director, Higginsville State Veterans' Cemetery	Jess Rasmussen	(660) 584-5252
<i>20109 Business Hwy. 13, Higginsville 64037</i>		
Director, Bloomfield State Veterans' Cemetery	Ken Swearingin	(573) 568-3871
<i>17357 Stars & Stripes Way, Bloomfield 63825-0566</i>		
Director, Jacksonville State Veterans' Cemetery	Jerry Quigley	(660) 295-4237
<i>1479 County Rd. 1675, Jacksonville 65260</i>		

Division of Alcohol and Tobacco Control

Truman State Office Bldg., PO Box 837, Jefferson City 65102-0837, FAX (573) 526-4540

State Supervisor	Peter W. Lobdell	(573) 751-4092
Deputy State Supervisor	Mike Schler	(573) 751-2333
Administrative Assistant	Kristy Westrich	(573) 751-4092
Chief of Enforcement	Steve Shimmens	(573) 751-2333
Administrative Services Manager	Karen Gaut	(573) 751-2333
Fiscal and Administrative Manager	Diane Markway	(573) 751-2333
Tobacco Program Manager	Vanessa Mure	(573) 751-2333

District Offices:

I	Joe Hodgins	(816) 889-2574
<i>Fletcher Daniels State Office Bldg., 615 E. 13th St., Rm. 506, Kansas City 64106</i>		
II	Steve Shimmens	(573) 751-2964
<i>Truman State Office Bldg., Rm. 860, PO Box 837, Jefferson City 65102-0837</i>		
III	Richard Weiser	(314) 340-6835
<i>Wainwright State Office Bldg., 111 N. Seventh, St. Louis 63101-2134</i>		

Missouri State Water Patrol

2401 E. McCarty, PO Box 1368, Jefferson City 65102-1368

Commissioner	Col. Rad C. Talburt	(573) 751-3333
Assistant Commissioner	Ltc. Michael Smith	(573) 751-3333
Commander, Administrative Services	Maj. Tommy Roam	(573) 751-3333
Commander, Field Services	Maj. Joseph Hughes	(573) 751-3333
Commander, Technical Services	Capt. Hans Huenink	(573) 751-3333
Director, Criminal Investigations	Cpl. Jay Pragman	(573) 751-3333
Commander, Training and Personnel	Capt. Paul Kennedy	(573) 751-3333
Commander, Support Services	Capt. Mark Richerson	(573) 751-3333
Director, Safety Education and CALEA	Cpl. Alan Barbonek	(573) 751-3333
Director, Public Information	Lt. Nick Humphrey	(573) 751-3333
Director, Communications	Becky Haskamp	(573) 751-3333
Fiscal Director	Darla Otto	(573) 751-3333

Districts:

I (West Central Missouri)	Capt. James E. Marlin	(573) 751-3333
II (Central Missouri)	Capt. Matt Walz	(573) 751-3333
III (Southwest Missouri)	Capt. Gary T. Haupt	(417) 335-6081
IV (Southeast Missouri)	Capt. Robert Searey	(573) 751-3333

V (Northeast Missouri) Capt. Dale G. Sluhan (573) 751-3333
 VI (Northwest Missouri) Capt. William E. Cox (816) 525-9657

Missouri Capitol Police

301 W. High St., PO Box 36, Jefferson City 65102-0036, FAX (573) 526-3898

Police Chief Todd Hurt (573) 751-2764
 Operations Capt. Paul Minze (573) 751-2764
 Protective Services Lt. Dan Hoerschgen (573) 751-4141
 Executive Assistant MaryAnn Craig (573) 526-6028
 Communications Coordinator Sgt. Stacy Skiles (573) 526-5330
 Emergency/Police Services (573) 522-2222

Missouri State Highway Patrol

1510 E. Elm St., PO Box 568, Jefferson City 65102-0568, FAX (573) 751-9419

Superintendent Col. James Keathley (573) 751-2901
 Assistant Superintendent Lt. Col. Richard Coffey (573) 526-6130
 Chief of Staff Capt. J. Bret Johnson (573) 522-9816
 Administrative Services Bureau Maj. H.E. McKay (573) 526-6110
 Criminal Investigation Bureau Maj. Ron Replogle (573) 526-6230
 Field Operations Bureau Maj. A.D. Penn (573) 751-2892
 Support Services Bureau Maj. L.E. Lacy (573) 526-6150
 Technical Services Bureau Maj. Bob Bloomberg (573) 526-6140
 Troops:

A Capt. Vince Ellis (816) 622-0800
 Lee's Summit 64063-0158 FAX (816) 246-7177
 B Capt. J.W. Elliott (660) 385-2132
 Macon 63552-1030 FAX (660) 385-3920
 C Capt. Ron Johnson (314) 340-4000
 St. Louis 63141-8550 FAX (314) 340-4010
 D Capt. Randy Beydler (417) 895-6868
 Springfield 65803-5044 FAX (417) 895-6877
 E Capt. G.E. Ridens (573) 840-9500
 Poplar Bluff 63901-8718 FAX (573) 840-9509
 F Capt. D.A. Schmidt (573) 751-1000
 Jefferson City 65102-0568 FAX (573) 751-6814
 G Capt. B.E. Chadwick (417) 469-3121
 Willow Springs 65793-0010 FAX (417) 469-3105
 H Capt. J.B. Hoggatt (816) 387-2345
 St. Joseph 64508-8580 FAX (816) 387-2349
 I Capt. Randy Becker (573) 368-2345
 Rolla 65401-0128 FAX (573) 368-2352

Division of Fire Safety

PO Box 844, Jefferson City 65102, FAX (573) 751-1744

State Fire Marshal Randy Cole (573) 751-2930
 Assistant State Fire Marshal Greg Carrell (573) 751-2930

Office of Adjutant General

Missouri National Guard, Ike Skelton Training Site, 2302 Militia Drive, Jefferson City, 65101-1203

Adjutant General of Missouri MG King E. Sidwell (573) 638-9710
 Administrative Assistant Gail A. Schrimpf (573) 638-9711
 Military Executive Col. (Ret.) Allen Stark (573) 638-9623
 Chief of Staff Col. Dwight D. Lusk (573) 638-9616
 Deputy Military Executive Ltc. Dennis Cruts (573) 638-9630
 Director of State Resources Col. (Ret.) William Stucker (573) 638-9609
 State Personnel Manager Donna Truman (573) 638-9845

Public Affairs	Cpt. Tammy Spicer	(573) 638-9846
Facilities Management	Ltc. Brent Beckley	(573) 638-9750
Deputy Facilities Management	Paul Junkans	(573) 638-9553
Military Records and Archives	Ron Whittle	(573) 638-9890

State Emergency Management Agency

The Missouri Army National Guard Training Center, PO Box 116, Jefferson City 65102, (573) 526-9100

Director	Ronald M. Reynolds	(573) 526-9101
Deputy Director	Duane R. Nichols	(573) 526-9143
Operations	Steve Moody	(573) 526-9103
Planning/Disaster Recovery	Charles May	(573) 526-9112
Fiscal	Craig Rodick	(573) 526-9106
Floodplain Management/Mitigation	Randy Schrivner	(573) 526-9141

Missouri Gaming Commission

3417 Knipp Dr., PO Box 1847, Jefferson City 65102, Telephone: (573) 526-4080, FAX (573) 526-1999

Executive Director	Gene McNary	(573) 526-4083
Chief Deputy Director, Enforcement	Roger Stottlemire	(573) 526-2329
Deputy Director, Administration	Alden Henrickson	(573) 526-4094
Chief Counsel	Christopher Hinckley	(573) 526-4082

Satellite Offices

<i>St. Louis, 11775 Borman Dr., Ste. 104, St. Louis 63146</i>	(314) 340-4400
<i>Kansas City, 6300 Enterprise Rd., Ste. 125, Kansas City 64120</i>	(816) 482-5700

Department of Revenue

PO Box 311, Sixth Fl., Truman State Office Building, Jefferson City 65105-0311
www.dor.mo.gov

The Department of Revenue, created by Article IV, Section 22, of the 1945 Missouri Constitution, is responsible for collecting taxes, titling and registering motor vehicles, and licensing drivers throughout the state.

The director, appointed by the governor and confirmed by the Senate, is responsible for all operations and policies of the department.

Three divisions administer the operations of the department: Division of Customer Services, Division of Fiscal Services and Division of Legal Services. Customer service is the number one priority for the department. The department's goal is to serve Missourians in a more efficient and effective manner while saving tax dollars.

Director	Trish Vincent	(573) 751-5671
Deputy Director	Lowell Pearson	(573) 751-2992
Director, Division of Customer Services	Julie A. Allen	(573) 526-1824
<i>PO Box 629, Jefferson City 65105-0629</i>		
Director, Division of Fiscal Services	Kim Lauer	(573) 751-4373
<i>PO Box 87, Jefferson City 65105-0087</i>		
Director, Division of Legal Services	Omar Davis	(573) 751-4413
<i>PO Box 475, Jefferson City 65105-0475</i>		

State Tax Commission

PO Box 146, Jefferson City 65102-0146

Chair	Bruce E. Davis	(573) 751-2414
Member	Jennifer Tidwell	(573) 751-2414
Member	Charles F. Nordwald	(573) 751-2414

Lottery Commission

Executive Director	Larry Jansen	(573) 751-4050
Director of Communications	Gary Gonder	(573) 751-4050
Director of Marketing	Adam Hall	(573) 751-4050
Director of Security	Bob Gartner	(573) 751-4050
Chief Financial Officer	Michael Lauf	(573) 751-4050
Headquarters		
<i>1823 Southridge Dr., Jefferson City 65102</i>		(573) 751-4050
Springfield Regional Office		
<i>1506 E. Raynell, Springfield 65804</i>		(417) 888-4227
Kansas City Regional Office		
<i>3630 Arrowhead Ave., Independence 64057</i>		(816) 795-8811
St. Louis Regional Office		
<i>1831 Craig Park Ct., St. Louis 63146</i>		(314) 340-5800

Taxation

Business Registration/License	(573) 751-5860
Cigarette Tax	(573) 751-7163
Corporate Income Tax	(573) 751-4541
County Taxes and Fees	(573) 751-5900
Delinquent Taxes/Balance Due (Sales/Withholding/Individual/Corporate)	(573) 751-7200

Delinquent Tax/Balance Due (Motor Vehicle Sales Tax)	(573) 751-3535
	(800) 347-7390
Discovery/Federal Match	(573) 751-8150
Electronic Filing	(573) 751-8150
Estate Tax	(573) 751-4768
Financial Institution Tax	(573) 751-2326
Forms	(573) 751-5337
	(800) 877-6881
Forms by Fax	(573) 751-4800
Franchise Tax	(573) 751-4541
Fuel Tax	(573) 751-2611
Individual Income Tax	(573) 751-3505
Insurance Premium Tax	(573) 751-2326
Local Taxes	(573) 751-4876
Motor Vehicle Refunds	(573) 751-4792
Nexus	(573) 522-4989
Other Tobacco Products	(573) 751-5772
Partnership/Fiduciary	(573) 751-1467
Property Tax Credit	(573) 751-3505
Refunds–Individual Income Tax	(866) 433-7259
Refunds–Withholding Tax	(573) 751-8750
Refunds–Sales/Use Tax	(573) 526-9938
Sales/Use Tax	(573) 751-2836
Tax Clearance/No Tax Due	(573) 751-9268
Telefile/Individual Income Tax	(573) 751-8150
Telefile/Sales (Zero) and Withholding	(573) 751-8150
	(888) 948-4653
Tire Fee	(573) 751-2836
Transient Employers	(573) 751-0459
Voluntary Compliance	(573) 751-8612
Withholding Tax	(573) 751-5752

Motor Vehicle and Driver License

Abandoned Vehicles (Property)	(573) 526-3669
ATV Decals/Replacement Decals	(573) 526-3669
Contract Offices	(573) 526-3669
Dealer Complaints	(800) 887-3994
Dealer Registration/License	(573) 751-8343
Disabled Placards/Plates	(573) 526-3669
Driver License Issuance	(573) 751-2730
Driver License Suspensions (Alcohol Offenses-Administrative Actions)	(573) 751-4833
Driver License Suspensions (Motor Vehicle Accidents)	(573) 751-7195
Driver License Suspensions (Traffic Violations/Points)	(573) 751-4475
Driver Improvement Programs	(573) 751-4475
Drivers Privacy Protection Act	(573) 751-4300
Identification Card (Non-driver License)	(573) 751-2730
License Plate Renewal Requirements	(573) 526-3669
Limited Driving Privileges	(573) 751-4475
Missouri Online Registration Exchange System	(573) 526-3669
Notice of Lien	(573) 526-3669
On-line Personal Property Tax System	(573) 751-3180
Records–Driver License	(573) 526-3669
Records–Motor Vehicle	(573) 526-3669
Sales Tax–Motor Vehicle	(573) 526-3669
School Bus Endorsements	(573) 751-2730
Specialty or Personalized Plates	(573) 526-3669
Substance Abuse Traffic Offender Program (SATOP)	(573) 751-4833
Titling Questions and Requirements	(573) 526-3669
Vehicle Temporary Tag (Permit)	(573) 526-3669

Department of Social Services

Broadway State Office Bldg., PO Box 1527, Jefferson City 65102-1527
www.dss.mo.gov

The Missouri Department of Social Services was constitutionally established in 1974 because "the health and general welfare of the people are matters of primary public concern." The department is charged with administering programs to promote, safeguard, and protect the general welfare of children; to maintain and strengthen family life; and to aid people in need as they strive to achieve their highest level of independence.

The department is organized into four program divisions: Children's Division, Family Support Division, Division of Medical Services, and the Division of Youth Services. The Divisions of Budget & Finance, Legal Services, and General Services provide department-wide administrative and support services.

The department cooperates and partners with many private organizations, businesses and individuals to extend the outreach of human services to Missouri citizens.

Director	Deborah E. Scott	(573) 751-4815
Interim Deputy Director	Brian Kinkade	(573) 751-4815
Special Assistant to the Director	Jandra Carter	(573) 751-4815
Director, State Technical Assistance Team (STAT)	Gus Kolilis	(573) 751-5980
Legislative Director	Vicky Weimholt	(573) 751-4815

Division of Budget and Finance

Broadway State Office Bldg., PO Box 1082, Jefferson City 65102-1082

Interim Director	James W. Uffmann	(573) 751-7533
Deputy Director, Budget and Planning	Jennifer Tidball	(573) 751-2171
Deputy Director, Grants Management	Roger Backes	(573) 751-2170
Designated Principal Assistant	Theresa McDonald	(573) 526-8758

Division of General Services

2724 Merchants Dr., PO Box 1643, Jefferson City 65102-1643

Director	(Vacancy)	(573) 751-3870
Deputy Director	Rick Contryman	(573) 751-3870
Deputy Director	John Giles	(573) 751-3870

Division of Legal Services

Broadway State Office Bldg., PO Box 1527, Jefferson City 65102-1527

Director	Harry Williams	(573) 751-1334
Special Counsel for Administrative Affairs	Jennifer Stilabower	(573) 526-0414
Special Counsel for Litigation	Mark Gutchen	(573) 751-3229
Designated Principal Assistant	Gina Jacobs	(573) 526-0424
Deputy Director, Investigations	Larry Dickerson	(573) 751-0803
Deputy Director, Administrative Hearings	Mona Smith	(573) 526-5240

Children's Division

615 Howerton Ct., PO Box 88, Jefferson City 65103-0088

Director	Paula Neese	(573) 526-6009
Designated Principal Assistant	Celesta Hartgraves	(573) 526-6009
Assistant Director for Administration	James Woodsmall	(573) 751-4920

Special Assistant, Early Childhood and Prevention	Doris Hallford	(573) 751-6793
Deputy Director, Planning & Performance Management	Jim Harrison	(573) 751-2502
Deputy Director, Practice & Professional Development	Bonnie Washeck	(573) 751-2427
Northern Region		
Regional Director	Marta Halter	(573) 592-4090
<i>106 N. Hospital Dr., PO Box 607, Fulton 65251-0607</i>		
Southern Region		
Regional Director	Julie Lester	(573) 346-3363
<i>146 Rodeo Rd., Camdenton 65020</i>		
Jackson County		
Regional Director	Virginia Lewis-Brunk	(816) 889-2815
<i>Fletcher Daniels State Office Bldg., 615 E. 13th St., Kansas City 64106</i>		
St. Louis City		
Regional Director	Tena Thompson	(314) 340-7007
<i>Wainwright State Office Bldg., 111 N. Seventh St., St. Louis 63101</i>		
St. Louis County		
Regional Director	Viki Fagyal	(314) 426-8402
<i>9900 Page Ave., St. Louis 63132</i>		
Family Support Division		
<i>615 Howerton Ct., PO Box 2320, Jefferson City 65103-2320</i>		
Director	Janel Luck	(573) 751-4247
Deputy Director, IM Program and Policy	Charles Bentley	(573) 751-3124
Designated Principal Assistant, Financial Management/Services	Shari Allen	(573) 751-4206
Designated Principal Assistant, Personnel/Media Relations	Corrine Beakley	(573) 751-5253
Designated Principal Assistant, Services for the Blind/Legislative Liaison	Mike Fester	(573) 751-4249
Designated Principal Assistant, IM Field Operations	Valerie Davis	(314) 877-2189
Designated Principal Assistant, Child Support Field Operations	Alyson Campbell	(573) 522-2135
Deputy Director, Child Support Program & Policy	Laura O'Mara	(573) 526-3716
NW/NE Region (IM Field Liaison)	Jim Simmons	(660) 543-5000
<i>505-B N. Ridgeview, PO Box 576, Warrensburg 64093</i>		
SE Region (IM Field Liaison)	Darrell Deken	(573) 840-9260
<i>1003 Wildwood Dr., Ste. E, Dexter 63841</i>		
SW Region (IM Field Liaison)	Debra Jones	(417) 745-6491
<i>1721 W. Elfindale, Ste. 205, Springfield 65807</i>		
Kansas City Region (IM Field Liaison)	Marge Randle	(816) 889-2500
<i>615 E. 13th St., Kansas City 64106</i>		
St. Louis Region (IM Field Liaison)	Bob Fant	(314) 429-6732
<i>9900 Page Ave., St. Louis 63103</i>		
Kansas City Region		
Child Support Field Liaison	Jeanine Zumalt	(816) 889-5191
<i>301 E. Armour Blvd., Fifth Fl., Kansas City 64111</i>		
St. Louis Region		
Child Support Field Liaison	Jim Carney	(314) 416-2100
<i>7545 S. Lindbergh, Ste. 150, St. Louis 63125</i>		

Division of Medical Services*615 Howerton Ct. PO Box 6500, Jefferson City 65102*

Interim Director	Steven E. Renne	(573) 751-6922
Deputy Director, Finance & Operations	Margie Mueller	(573) 751-6922
Deputy Director, Clinical Services	George Oestreich	(573) 751-6963
Chief Financial Officer	Donna Siebeneck	(573) 751-1092
Director, Program Integrity/Cost Recovery	Judith Muck	(573) 751-3399
Director, Information Services	Debbie Kolb	(573) 751-7996
Director, Program Management	Sandra K. Levels	(573) 751-6926
Legal Counsel	Billie Waite	(573) 751-6922

Division of Youth Services*3418 Knipp, Ste. A-1, PO Box 447, Jefferson City 65102-0447*

Director	Tim Decker	(573) 751-3324
Deputy Director	Tom Breedlove	(573) 751-3324
Deputy Director	Bill Heberle	(573) 751-3324
Regional Administrator, Northeast Region	Larry Strecker	(573) 449-2939

1240 E. Brownschool Rd., Columbia 65202

Regional Administrator, Northwest Region	Courtney Collier	(816) 889-3850
--	------------------	----------------

1910 Genessee, Kansas City 64102

Regional Administrator, St. Louis Region	Lew Mueller	(314) 340-6904
--	-------------	----------------

Wainwright State Office Bldg., 111 N. Seventh St., Rm. 221, St. Louis 63101

Regional Administrator, Southeast Region	Paula Shaw	(573) 840-9540
--	------------	----------------

1903 Northwood, Poplar Bluff 63901

Regional Administrator, Southwest Region	John Creson	(417) 895-6485
--	-------------	----------------

*1735 W. Catalpa, Ste. B, Springfield 65807***Division of Youth Services Advisory Board**

Chair	Dennis Kehm	(636) 797-5420
-------	-------------	----------------

1328 Melvin, Festus 63028

Vice Chair	Thelma Neff	(417) 866-3198
------------	-------------	----------------

802 N. Fairfax, Springfield 65802

Department of Transportation

*Department of Transportation Office Building, 105 W. Capitol Ave., Jefferson City 65102
(573) 751-2551, FAX: (573) 751-6555, E-mail: mail@modot.mo.gov
www.modot.gov*

The Department of Transportation is responsible for the five viable transportation alternatives available to Missourians: highways, aviation, waterways, transit and railroads. Those responsibilities include operation of the 32,000-mile highway system, including highway location, design, construction and maintenance.

The Missouri Highways and Transportation Commission, composed of six members, is the governing body of the department. The members are appointed by the governor, with the consent of the Senate.

The director and secretary are appointed by the commission. All other appointments are made by the director, with approval of the commission.

State Highways and Transportation Commission

Chair	James B. Anderson	(417) 862-5567
	<i>PO Box 1687, 202 S. John Q. Hammons Pkwy., Springfield 65806</i>	
Vice Chair	Duane S. Michie	(573) 333-1700, ext. 230
	<i>100 W. Third St., Caruthersville 63830</i>	
Member	Bill McKenna	(314) 560-2446
	<i>1120 Virginia Ave., Crystal City 63019</i>	
Member	(Vacancy)	
	<i>850 Elm Tree Ln., Kirkwood 63122</i>	
Member	Mike Kehoe	(573) 634-4444
	<i>807 Southwest Blvd., Jefferson City 65109</i>	
Member	David Gach	(816) 232-4542
	<i>4702 S. 169 Hwy., St. Joseph 64507</i>	
Secretary to Commission	Mari Ann Winters	(573) 751-3704

Transportation Officials

Director's Management Team

Director	Pete Rahn	(573) 751-4622
Chief Engineer	Kevin Keith	(573) 751-2803
Chief Financial Officer	Roberta Broeker	(573) 751-2803
Chief Counsel	Rich Tiemeyer	(573) 751-7454

Organizational Support Team

Director of Audits & Investigations	Bill Rogers	(573) 751-7446
Director of Community Relations	Shane Peck	(573) 751-1375
Director of Governmental Relations	Jay Wunderlich	(573) 522-9284
Director of Organizational Results	Mara Campbell	(573) 526-4335

System Delivery Team

Multimodal Operations	Brian Weiler	(573) 526-2169
Aviation	Joe Pestka	(573) 526-2169
Railroads	Rod Massman	(573) 526-2169
Transit	Steve Billings	(573) 526-2169
Waterways	Sherrie Martin	(573) 751-8620

Director of Program Delivery	Dave Nichols	(573) 751-0760
State Bridge Engineer	(Vacancy)	(573) 751-4676
State Construction & Materials Engineer	Dave Ahlvers	(573) 751-3689
External Civil Rights Administrator	Lester Woods Jr.	(573) 526-2978
State Design Engineer	Kathy Harvey	(573) 751-2876
Right of Way Director	Terry Sampson	(573) 526-4362
Transportation Planning Director	Machelle Watkins	(573) 526-8058
Director of System Management	Don Hillis	(573) 751-6602
Highway Safety Director	LeAnna Depue	(573) 751-7643
State Maintenance Engineer	Jim Carney	(573) 751-2785
Motor Carrier Services Director	Jan Skouby	(573) 751-4021
State Traffic Engineer	Eileen Rackers	(573) 526-0117

System Facilitation Team

Controller	Deborah Rickard	(573) 751-7098
Employee Benefits Manager	Jeff Padgett	(573) 526-0138
Equal Opportunity Director	Brenda Treadwell-Martin	(573) 751-8602
Deputy Administrative Officer General Services	Dave DeWitt	(573) 751-3720
Human Resources Director	Micki Knudsen	(573) 751-2804
Information Systems Director	Mike Miller	(573) 526-8002
Resource Management Director	Kirk Boyer	(573) 526-8106
Risk Management Director	Beth Ring	(573) 526-5594
MoDOT and Patrol Employees' Retirement System	Norm Robinson	(573) 751-5533, ext. 103

District Engineers

Northwest District <i>3602 N. Belt Hwy., St. Joseph 64506</i>	Don Wichern	(816) 387-2350
North Central District <i>902 N. Missouri St., PO Box 8, Macon 63552</i>	Dan Niec	(660) 385-3176
Northeast District <i>1711 Hwy. 61 S., PO Box 1067, Hannibal 63401</i>	(Vacancy)	(573) 248-2490
Kansas City Area District <i>600 N.E. Colbern Rd., Lee's Summit 64086</i>	Beth Wright	(816) 622-6500
Central District <i>1511 Missouri Blvd., PO Box 718, Jefferson City 65102</i>	Roger Schwartze	(573) 751-3322
St. Louis Metro District <i>1590 Woodlake Dr., Chesterfield 63017-5712</i>	Ed Hassinger	(314) 340-4100
Southwest District <i>3901 E. 32nd St., Joplin 64804</i>	Rebecca Baltz	(417) 629-3300
Springfield District <i>3025 E. Kearney, MPO 868, Springfield 65801</i>	Kirk Juranas	(417) 895-7600
South Central District <i>910 Springfield Rd., PO Box 220, Willow Springs 65793</i>	Tom Stehn	(417) 469-3134
Southeast District <i>2675 N. Main St., PO Box 160, Sikeston 63801</i>	Mark Shelton	(573) 472-5333